



Certificate of Analysis

Compliance Test

Client Information:

TERP NATION LLC
2500 S PARK ROAD
BAY#1
PEMBROKE PARK, FL
33009

Manufacturing Facility:

TERP NATION LLC
2500 S PARK ROAD
BAY#1
PEMBROKE PARK, FL 33009

Batch Data:

Batch # S061125MK
Batch Date: 2025-08-21
Extracted From: HEMP

Order Details:

Test Reg State: Florida
Food Permit #: 420113

Order #

TER250821-060001
Order Date: 2025-08-21
Sample # AAHA556

Sampling Date: 2025-08-26

Lab Batch Date: 2025-08-26
Orig. Completion Date: 2025-09-02

Initial Gross Weight: 25.200 g

Net Weight per Package:

2000.000 mg
Sampling Method:
MSP 7.3.1

Net Weight per Serving:

2000 mg
Servings Per Package:
1

Statement of Amendment: Updated Heavy Metals



Product Image



Potency
Tested



Terpenes
Tested



Heavy Metals
Passed



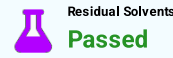
2-3-Butanedione
Passed



Mycotoxins
Passed



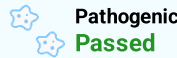
Pesticides
Passed



Residual Solvents
Passed



Water Activity
Tested



Pathogenic
Passed



Microbiology (qPCR)
Passed



Vitamin E
Passed

Potency Summary

Delta 9 THC	<LOQ	Total Active CBD	0.0830%
per Serving	0.00 mg	per Serving	1.66 mg
per Package	0.00 mg	per Package	1.66 mg
Total CBG	8.35%	Total CBN	0.414%
per Serving	167 mg	per Serving	8.29 mg
per Package	167 mg	per Package	8.29 mg
Total Cannabinoids	25.9%	Total Active THC	0.0360%
per Serving	518 mg	per Serving	0.720 mg
per Package	518 mg	per Package	0.720 mg
Total DELTA9-THCP	7.67%		
per Serving	153 mg		
per Package	153 mg		

Terpenes Summary

Analyte	Result (mg/g)	(%)
trans-Caryophyllene	3.431	0.343%
Linalool	1.363	0.136%
alpha-Bisabolol	1.298	0.13%
Guaiaol	0.781	0.078%
Caryophyllene oxide	0.697	0.07%
alpha-Humulene	0.464	0.046%
trans-Nerolidol	0.454	0.045%
Fenchyl Alcohol	0.42	0.042%
Total Terpeneol	0.228	0.023%

Total Terpenes: 0.913%

Detailed Terpenes Analysis is on the following page

Aixia Sun
Aixia Sun Lab Director/Principal Scientist
D.H.Sc., M.Sc., B.Sc., MT (AAB)



Definitions and Abbreviations used in this report: Total Active CBD = CBD + (CBD-A * 0.877), *Total CBDV = CBDV + (CBDVA * 0.867), Total Active THC = THCA-A * 0.877 + Delta 9 THC, Total THCV = THCV + (THCVA * 0.87), CBG Total = (CBGA * 0.878) + CBG, CBN Total = (CBNA * 0.876) + CBN, Total CBC = CBC + (CBCA * 0.877), Total THC-O-Acetate = Delta 8 THC-O-Acetate + Delta 9 THC-O-Acetate, Total THCP = Delta8-THCP + Delta9-THCP, Total Cannabinoids = Total percentage of cannabinoids within the sample, (mg/ml) = Milligrams per Milliliter, LOQ = Limit of Quantitation, LOD = Limit of Detection, Dilution = Dilution Factor, (ppb) = Parts per Billion, (%) = Percent, (cfu/g) = Colony Forming Unit per Gram, (µg/g) = Microgram per Gram, (ppm) = Parts per Million, (µg/g) = (µg/g), (aw) = Water Activity, (mg/Kg) = Milligram per Kilogram. ACS uses simple acceptance criteria. Passed - Analyte/microbe is not detected or is at the level below the action limit per FL rule 64ER20-39, 5K-4.036, 5K-4.034. Failed - Analyte/microbe is at the level that equal or above the action limit per FL rule 64ER20-39, 5K-4.036, 5K-4.034. The results apply to the sample as received. Revised report- see statement of amendment above.

This report shall not be reproduced, without written approval, from ACS Laboratory. The results of this report relate only to the material or product analyzed. Test results are confidential unless explicitly waived otherwise. ACS Laboratory is accredited to the ISO/IEC 17025:2017 Standard. The scope of this analysis is limited to the parameters listed in this COA. Testing for food additives (e.g., preservatives, colorant, flavor enhancers) was not conducted. Therefore, no conclusions should be drawn regarding the presence or absence of such additives. The current and valid permit number for the facility issued by a human health or food safety regulatory entity with authority over the facility is stated above, and that the facility meets the human health or food safety sanitization requirements of the regulatory entity as documented by the regulatory entity and evidenced by the valid permit number



Certificate of Analysis
Compliance Test

Client Information:
TERP NATION LLC
2500 S PARK ROAD
BAY#1
PEMBROKE PARK, FL
33009

Manufacturing Facility:
TERP NATION LLC
2500 S PARK ROAD
BAY#1
PEMBROKE PARK, FL 33009

Batch Data:
Batch # S061125MK
Batch Date: 2025-08-21
Extracted From: HEMP

Order Details:
Test Reg State: Florida
Food Permit #: 420113

Order #
TER250821-060001
Order Date: 2025-08-21
Sample # AAHA556

Sampling Date: 2025-08-26
Lab Batch Date: 2025-08-26
Orig. Completion Date: 2025-09-02

Initial Gross Weight: 25.200 g

Net Weight per Package:
2000.000 mg
Sampling Method:
MSP 7.3.1

Net Weight per Serving:
2000 mg
Servings Per Package:
1

Potency 25 (LCUV)
Specimen Weight: 1698.450 mg

Tested

SOP13.001 (LCUV)

Pieces For Panel: 1

Analyte	Dilution (1:n)	LOD (mg/g)	LOQ (%)	Result (mg/g)	(%)	Per Serving (mg)	Per Package (mg)
CBGA	150.000	8.000000E-5	0.0125	86.9	8.69	174	174
Delta9-THCP	150.000	1.170000E-5	0.01	76.7	7.67	153	153
Delta-8 THC	150.000	2.600000E-5	0.0125	69.5	6.95	139	139
CBG	150.000	2.480000E-4	0.0125	7.18	0.718	14.4	14.4
CBCA	150.000	1.070000E-4	0.0125	4.71	0.471	9.42	9.42
CBNA	150.000	9.500000E-5	0.0125	3.76	0.376	7.52	7.52
Delta8-THCP	150.000	3.750000E-4	0.0125	3.20	0.320	6.40	6.40
CBC	150.000	1.800000E-5	0.0125	2.70	0.270	5.40	5.40
Delta-8 THCV	150.000	4.000000E-5	0.0125	1.22	0.122	2.44	2.44
CBN	150.000	1.400000E-5	0.0125	0.850	0.0850	1.70	1.70
CBT	150.000	2.000000E-4	0.0125	0.770	0.0770	1.54	1.54
CBD	150.000	5.400000E-5	0.0125	0.480	0.0480	0.960	0.960
THCA-A	150.000	3.200000E-5	0.0125	0.410	0.0410	0.820	0.820
CBDA	150.000	1.000000E-5	0.0125	0.400	0.0400	0.800	0.800
THCV	150.000	7.000000E-6	0.0125	0.270	0.0270	0.540	0.540
CBDV	150.000	6.500000E-5	0.0125	<LOQ	<LOQ	0.00	0.00
CBDVA	150.000	1.400000E-5	0.0125	<LOQ	<LOQ	0.00	0.00
CBL	150.000	3.500000E-5	0.0125	<LOQ	<LOQ	0.00	0.00
Delta-8 THC-O Acetate	150.000	2.700000E-5	0.025	<LOQ	<LOQ	0.00	0.00
Delta-9 THC	150.000	1.300000E-5	0.0125	<LOQ	<LOQ	0.00	0.00
Delta-9 THC-O Acetate	150.000	7.700000E-5	0.025	<LOQ	<LOQ	0.00	0.00
Exo-THC	150.000	2.300000E-4	0.0125	<LOQ	<LOQ	0.00	0.00
THCB	150.000	1.800000E-4	0.0163	<LOQ	<LOQ	0.00	0.00
THCH	150.000	3.500000E-4	0.0163	<LOQ	<LOQ	0.00	0.00
THCVA	150.000	4.700000E-5	0.0125	<LOQ	<LOQ	0.00	0.00
Total Active THC	150.000			0.360	0.0360	0.720	0.720
Total Active CBD	150.000			0.831	0.0831	1.66	1.66

Aixia Sun Lab Director/Principal Scientist
D.H.Sc., M.Sc., B.Sc., MT (AAB)

Definitions are found on page 1

This report shall not be reproduced, without written approval, from ACS Laboratory. The results of this report relate only to the material or product analyzed. Test results are confidential unless explicitly waived otherwise. ACS Laboratory is accredited to the ISO/IEC 17025:2017 Standard. The scope of this analysis is limited to the parameters listed in this COA. Testing for food additives (e.g., preservatives, colorant, flavor enhancers) was not conducted. Therefore, no conclusions should be drawn regarding the presence or absence of such additives. The current and valid permit number for the facility issued by a human health or food safety regulatory entity with authority over the facility is stated above, and that the facility meets the human health or food safety sanitization requirements of the regulatory entity as documented by the regulatory entity and evidenced by the valid permit number





Certificate of Analysis
Compliance Test

Client Information: TERP NATION LLC 2500 S PARK ROAD BAY#1 PEMBROKE PARK, FL 33009	Manufacturing Facility: TERP NATION LLC 2500 S PARK ROAD BAY#1 PEMBROKE PARK, FL 33009	Batch Data: Batch # S061125MK Batch Date: 2025-08-21 Extracted From: HEMP	Order Details: Test Reg State: Florida Food Permit #: 420113
--	---	---	---

Order # TER250821-060001 Order Date: 2025-08-21 Sample # AAHA556	Sampling Date: 2025-08-26 Lab Batch Date: 2025-08-26 Orig. Completion Date: 2025-09-02	Initial Gross Weight: 25.200 g	Net Weight per Package: 2000.000 mg Sampling Method: MSP 7.3.1	Net Weight per Serving: 2000 mg Servings Per Package: 1
--	---	---------------------------------------	---	--

Terpenes				Tested			
Specimen Weight: 205.980 mg				SOP13.045 (GC-MS/GC (Liquid Injection))			
Dilution Factor: 30.000							
Analyte	LOQ (%)	Result (mg/g)	(%)	Analyte	LOQ (%)	Result (mg/g)	(%)
trans-Caryophyllene	0.002	3.43	0.343	Camphene	0.002	<LOQ	<LOQ
Linalool	0.002	1.36	0.136	Camphors	0.006	<LOQ	<LOQ
alpha-Bisabolol	0.002	1.30	0.130	cis-Nerolidol	0.002	<LOQ	<LOQ
Guaiol	0.002	0.781	0.078	Eucalyptol	0.002	<LOQ	<LOQ
Caryophyllene oxide	0.002	0.697	0.070	Farnesene	0.002	<LOQ	<LOQ
alpha-Humulene	0.002	0.464	0.046	Fenchone	0.002	<LOQ	<LOQ
trans-Nerolidol	0.002	0.454	0.045	Gamma-Terpinene	0.002	<LOQ	<LOQ
Fenchyl Alcohol	0.002	0.420	0.042	Geraniol	0.002	<LOQ	<LOQ
Total Terpeneol	0.00126	0.228	0.023	Geranyl acetate	0.002	<LOQ	<LOQ
(+)-Cedrol	0.002	<LOQ	<LOQ	Hexahydrothymol	0.002	<LOQ	<LOQ
(R)-(+)-Limonene	0.002	<LOQ	<LOQ	Isoborneol	0.002	<LOQ	<LOQ
3-Carene	0.002	<LOQ	<LOQ	Isopulegol	0.002	<LOQ	<LOQ
alpha-Cedrene	0.002	<LOQ	<LOQ	Nerol	0.002	<LOQ	<LOQ
alpha-Phellandrene	0.002	<LOQ	<LOQ	Ocimene	0.00033	<LOQ	<LOQ
alpha-Pinene	0.002	<LOQ	<LOQ	Pulegone	0.002	<LOQ	<LOQ
alpha-Terpinene	0.002	<LOQ	<LOQ	Sabinene	0.002	<LOQ	<LOQ
beta-Myrcene	0.002	<LOQ	<LOQ	Sabinene Hydrate	0.002	<LOQ	<LOQ
beta-Pinene	0.002	<LOQ	<LOQ	Terpinolene	0.002	<LOQ	<LOQ
Borneol	0.004	<LOQ	<LOQ	Valencene	0.002	<LOQ	<LOQ

2,3-butanedione(Diacetyl) Florida		Passed	
Specimen Weight: 16.300 mg		SOP13.039 (GCMS-HS)	
Dilution Factor: 1.000			
Analyte	LOD (ppm)	LOQ (ppm)	Result (ppm)
2,3-Butanedione	0.000	0.2	<LOQ

Water Activity Florida		Tested	
Specimen Weight: 0.500 g		SOP13.016 (Water Activity Analyzer)	
Dilution Factor: 1.000			
Analyte	Acceptable Range (aw)	Result (aw)	
Water Activity	.55 - .65	0.550	

Aixia Sun
Aixia Sun Lab Director/Principal Scientist
D.H.Sc., M.Sc., B.Sc., MT (AAB)

Definitions are found on page 1

This report shall not be reproduced, without written approval, from ACS Laboratory. The results of this report relate only to the material or product analyzed. Test results are confidential unless explicitly waived otherwise. ACS Laboratory is accredited to the ISO/IEC 17025:2017 Standard. The scope of this analysis is limited to the parameters listed in this COA. Testing for food additives (e.g., preservatives, colorant, flavor enhancers) was not conducted. Therefore, no conclusions should be drawn regarding the presence or absence of such additives. The current and valid permit number for the facility issued by a human health or food safety regulatory entity with authority over the facility is stated above, and that the facility meets the human health or food safety sanitization requirements of the regulatory entity as documented by the regulatory entity and evidenced by the valid permit number





Certificate of Analysis
Compliance Test

Client Information: TERP NATION LLC 2500 S PARK ROAD BAY#1 PEMBROKE PARK, FL 33009	Manufacturing Facility: TERP NATION LLC 2500 S PARK ROAD BAY#1 PEMBROKE PARK, FL 33009	Batch Data: Batch # S061125MK Batch Date: 2025-08-21 Extracted From: HEMP	Order Details: Test Reg State: Florida Food Permit #: 420113
--	---	---	---

Order # TER250821-060001 Order Date: 2025-08-21 Sample # AAHA556	Sampling Date: 2025-08-26 Lab Batch Date: 2025-08-26 Orig. Completion Date: 2025-09-02	Initial Gross Weight: 25.200 g	Net Weight per Package: 2000.000 mg Sampling Method: MSP 7.3.1	Net Weight per Serving: 2000 mg Servings Per Package: 1
--	---	---------------------------------------	---	--

Total Yeast and Mold Specimen Weight: 988.100 mg Dilution Factor: 20.000	Passed SOP13.017 (qPCR)		
Analyte	LOQ (cfu/g)	Action Level (cfu/g)	Result (cfu/g)
Total Yeast/Mold	1000	100000	80300

Pathogenic SAE (qPCR) FL Specimen Weight: 1017.400 mg Dilution Factor: 1.000	Passed SOP13.029 (qPCR)				
Analyte	Action Level (cfu/g)	Result (cfu/g)	Analyte	Action Level (cfu/g)	Result (cfu/g)
Aspergillus (Flavus, Fumigatus, Niger, Terreus)	1	Absence in 1g	Shiga toxin-producing E. coli (STEC)	1	Absence in 1g
Salmonella	1	Absence in 1g			

Aixa Sun Lab Director/Principal Scientist
D.H.Sc., M.Sc., B.Sc., MT (AAB)



Definitions are found on page 1
This report shall not be reproduced, without written approval, from ACS Laboratory. The results of this report relate only to the material or product analyzed. Test results are confidential unless explicitly waived otherwise. ACS Laboratory is accredited to the ISO/IEC 17025:2017 Standard. The scope of this analysis is limited to the parameters listed in this COA. Testing for food additives (e.g., preservatives, colorant, flavor enhancers) was not conducted. Therefore, no conclusions should be drawn regarding the presence or absence of such additives. The current and valid permit number for the facility issued by a human health or food safety regulatory entity with authority over the facility is stated above, and that the facility meets the human health or food safety sanitization requirements of the regulatory entity as documented by the regulatory entity and evidenced by the valid permit number



Certificate of Analysis

Compliance Test

Client Information:

TERP NATION LLC
2500 S PARK ROAD
BAY#1
PEMBROKE PARK, FL
33009

Manufacturing Facility:

TERP NATION LLC
2500 S PARK ROAD
BAY#1
PEMBROKE PARK, FL 33009

Batch Data:

Batch # S061125MK
Batch Date: 2025-08-21
Extracted From: HEMP

Order Details:

Test Reg State: Florida
Food Permit #: 420113

Order #

TER250821-060001
Order Date: 2025-08-21
Sample # AAHA556

Sampling Date: 2025-08-26

Lab Batch Date: 2025-08-26
Orig. Completion Date: 2025-09-02

Initial Gross Weight: 25.200 g

Net Weight per Package:

2000.000 mg
Sampling Method:
MSP 7.3.1

Net Weight per Serving:

2000 mg
Servings Per Package:
1

E Vitamin E (Tocopheryl Acetate)

Specimen Weight: 590.200 mg

Dilution Factor: 2.540

Analyte	LOD (ppb)	LOQ (ppb)	Action Level (ppb)	Result (ppb)
Tocopheryl Acetate (Vitamin E Acetate)	0.705	500	500	<LOQ

Passed

SOP13.007 (LCMS/GCMS)

H Heavy Metals Florida

Specimen Weight: 249.600 mg

Dilution Factor: 200.321

Analyte	LOD (ppb)	LOQ (ppb)	Action Level (ppb)	Result (ppb)	Analyte	LOD (ppb)	LOQ (ppb)	Action Level (ppb)	Result (ppb)
Arsenic (As)	0.013	100	200	<LOQ	Lead (Pb)	0.007	100	500	<LOQ
Cadmium (Cd)	0.003	100	200	160	Mercury (Hg)	0.016	100	200	<LOQ

Passed

SOP13.048 (ICP-MS)

Mycotoxins

Specimen Weight: 590.200 mg

Dilution Factor: 2.540

Analyte	LOD (ppb)	LOQ (ppb)	Action Level (ppb)	Result (ppb)	Analyte	LOD (ppb)	LOQ (ppb)	Action Level (ppb)	Result (ppb)
Aflatoxin B1	0.304	6	20	<LOQ	Aflatoxin G2	0.271	6	20	<LOQ
Aflatoxin B2	0.077	6	20	<LOQ	Ochratoxin A	0.754	3.8	20	<LOQ
Aflatoxin G1	0.304	6	20	<LOQ					

Passed

SOP13.007 (LCMS/GCMS)

Aixia Sun
Aixia Sun Lab Director/Principal Scientist
D.H.Sc., M.Sc., B.Sc., MT (AAB)



Definitions are found on page 1

This report shall not be reproduced, without written approval, from ACS Laboratory. The results of this report relate only to the material or product analyzed. Test results are confidential unless explicitly waived otherwise. ACS Laboratory is accredited to the ISO/IEC 17025:2017 Standard. The scope of this analysis is limited to the parameters listed in this COA. Testing for food additives (e.g., preservatives, colorant, flavor enhancers) was not conducted. Therefore, no conclusions should be drawn regarding the presence or absence of such additives. The current and valid permit number for the facility issued by a human health or food safety regulatory entity with authority over the facility is stated above, and that the facility meets the human health or food safety sanitization requirements of the regulatory entity as documented by the regulatory entity and evidenced by the valid permit number



Certificate of Analysis
Compliance Test

Client Information:
TERP NATION LLC
2500 S PARK ROAD
BAY#1
PEMBROKE PARK, FL
33009

Manufacturing Facility:
TERP NATION LLC
2500 S PARK ROAD
BAY#1
PEMBROKE PARK, FL 33009

Batch Data:
Batch # S061125MK
Batch Date: 2025-08-21
Extracted From: HEMP

Order Details:
Test Reg State: Florida
Food Permit #: 420113

Order #
TER250821-060001
Order Date: 2025-08-21
Sample # AAHA556

Sampling Date: 2025-08-26
Lab Batch Date: 2025-08-26
Orig. Completion Date: 2025-09-02

Initial Gross Weight: 25.200 g

Net Weight per Package:
2000.000 mg
Sampling Method:
MSP 7.3.1

Net Weight per Serving:
2000 mg
Servings Per Package:
1

Residual Solvents - FL (CBD)
Specimen Weight: 16.300 mg

Passed
SOP13.039 (GCMS-HS)

Dilution Factor: 1.000

Analyte	LOD (ppm)	LOQ (ppm)	Action Level (ppm)	Result (ppm)	Analyte	LOD (ppm)	LOQ (ppm)	Action Level (ppm)	Result (ppm)
1,1-Dichloroethene	0.009	1.6	8	<LOQ	Heptane	0.001	13.9	5000	<LOQ
1,2-Dichloroethene	0.000	0.4	2	<LOQ	Hexane	0.068	11.7	250	<LOQ
Acetone	0.015	20.8	750	<LOQ	Isopropyl alcohol	0.005	13.9	500	<LOQ
Acetonitrile	0.060	11.7	60	<LOQ	Methanol	0.001	6.9	250	9.09
Benzene	0.000	0.2	1	<LOQ	Methylene chloride	0.003	24.3	125	<LOQ
Butanes	0.417	25	5000	<LOQ	Pentane	0.037	20.8	750	<LOQ
Chloroform	0.000	0.4	2	<LOQ	Propane	0.031	58.3	5000	<LOQ
Ethanol	0.002	27.8	5000	<LOQ	Toluene	0.001	29.2	150	<LOQ
Ethyl Acetate	0.001	11.1	400	<LOQ	Total Xylenes	0.000	29.2	150	<LOQ
Ethyl Ether	0.005	13.9	500	<LOQ	Trichloroethylene	0.001	4.9	25	<LOQ
Ethylene Oxide	0.004	1	5	<LOQ					

Aixia Sun
Aixia Sun Lab Director/Principal Scientist
D.H.Sc., M.Sc., B.Sc., MT (AAB)

Definitions are found on page 1

This report shall not be reproduced, without written approval, from ACS Laboratory. The results of this report relate only to the material or product analyzed. Test results are confidential unless explicitly waived otherwise. ACS Laboratory is accredited to the ISO/IEC 17025:2017 Standard. The scope of this analysis is limited to the parameters listed in this COA. Testing for food additives (e.g., preservatives, colorant, flavor enhancers) was not conducted. Therefore, no conclusions should be drawn regarding the presence or absence of such additives. The current and valid permit number for the facility issued by a human health or food safety regulatory entity with authority over the facility is stated above, and that the facility meets the human health or food safety sanitization requirements of the regulatory entity as documented by the regulatory entity and evidenced by the valid permit number





Certificate of Analysis
Compliance Test

Client Information: TERP NATION LLC 2500 S PARK ROAD BAY#1 PEMBROKE PARK, FL 33009	Manufacturing Facility: TERP NATION LLC 2500 S PARK ROAD BAY#1 PEMBROKE PARK, FL 33009	Batch Data: Batch # S061125MK Batch Date: 2025-08-21 Extracted From: HEMP	Order Details: Test Reg State: Florida Food Permit #: 420113
--	---	---	---

Order # TER250821-060001 Order Date: 2025-08-21 Sample # AAHA556	Sampling Date: 2025-08-26 Lab Batch Date: 2025-08-26 Orig. Completion Date: 2025-09-02	Initial Gross Weight: 25.200 g	Net Weight per Package: 2000.000 mg Sampling Method: MSP 7.3.1	Net Weight per Serving: 2000 mg Servings Per Package: 1
--	---	---------------------------------------	---	--

Pesticides Florida
Specimen Weight: 590.200 mg

Passed
SOP13.007 (LCMS/GCMS)

Analyte	LOD (ppb)	LOQ (ppb)	Action Level (ppb)	Result	Analyte	LOD (ppb)	LOQ (ppb)	Action Level (ppb)	Result
Abamectin	0.399	23.3	100	<LOQ	Fludioxonil	0.360	24.8	100	<LOQ
Acephate	0.141	24.8	100	<LOQ	Hexythiazox	0.113	24.8	100	<LOQ
Acequinocyl	2.178	24.8	100	<LOQ	Imazail	0.258	24.8	100	<LOQ
Acetamiprid	0.140	24.8	100	<LOQ	Imidacloprid	0.402	24.8	400	<LOQ
Aldicarb	0.203	24.8	100	<LOQ	Kresoxim Methyl	0.182	24.8	100	<LOQ
Azoxystrobin	0.188	24.8	100	<LOQ	Malathion	0.223	24.8	200	<LOQ
Bifenazate	0.086	24.8	100	<LOQ	Metalaxyl	0.270	24.8	100	<LOQ
Bifenthrin	0.100	24.8	100	<LOQ	Methiocarb	0.118	24.8	100	<LOQ
Boscalid	0.595	24.8	100	<LOQ	Methomyl	0.064	24.8	100	<LOQ
Captan	1.850	323	700	<LOQ	methyl-Parathion	2.390	24.8	100	<LOQ
Carbaryl	0.122	24.8	500	<LOQ	Mevinphos	0.093	24.8	100	<LOQ
Carbofuran	0.086	24.8	100	<LOQ	Myclobutanil	0.573	24.8	24.8	<LOQ
Chlorantraniliprole	0.084	24.8	1000	<LOQ	Naled	0.069	24.8	250	<LOQ
Chlordane	9.671	24.8	100	<LOQ	Oxamyl	0.041	24.8	500	<LOQ
Chlorfenapyr	1.500	24.8	100	<LOQ	Paclobutrazol	0.186	24.8	100	<LOQ
Chloromequat Chloride	0.205	24.8	1000	<LOQ	Pentachloronitrobenzene	7.950	24.8	150	<LOQ
Chlorpyrifos	0.109	24.8	100	<LOQ	Permethrin	0.624	24.8	100	<LOQ
Clofentazine	0.212	24.8	200	<LOQ	Phosmet	0.127	24.8	100	<LOQ
Coumaphos	0.206	24.8	100	<LOQ	Piperonylbutoxide	0.149	24.8	3000	<LOQ
Cyfluthrin	0.980	24.8	500	<LOQ	Prallethrin	1.476	24.8	100	<LOQ
Cypermethrin	0.985	24.8	500	<LOQ	Propiconazole	0.294	24.8	100	<LOQ
Daminozide	1.655	24.8	100	<LOQ	Propoxur	0.100	24.8	100	<LOQ
Diazinon	0.212	24.8	100	<LOQ	Pyrethrins	0.067	12.9	500	<LOQ
Dichlorvos	1.130	24.8	100	<LOQ	Pyridaben	0.140	24.8	200	<LOQ
Dimethoate	0.063	24.8	100	<LOQ	Spinetoram	0.424	24.8	200	<LOQ
Dimethomorph	2.581	24.8	200	<LOQ	Spinosad	0.028	24.8	100	<LOQ
Ethoprophos	0.151	24.8	100	<LOQ	Spiromesifen	0.120	24.8	100	<LOQ
Etofenprox	0.172	24.8	100	<LOQ	Spirotetramat	0.211	24.8	100	<LOQ
Etoxazole	0.866	24.8	100	<LOQ	Spiroxamine	0.533	24.8	100	<LOQ
Fenhexamid	0.588	24.8	100	<LOQ	Tebuconazole	0.230	24.8	100	<LOQ
Fenoxycarb	0.274	24.8	100	<LOQ	Thiacloprid	0.170	24.8	100	<LOQ
Fenpyroximate	0.198	24.8	100	<LOQ	Thiamethoxam	0.179	24.8	500	<LOQ
Fipronil	0.317	24.8	100	<LOQ	Trifloxystrobin	0.134	24.8	100	<LOQ
Fonicamid	0.466	24.8	100	<LOQ					

Aixia Sun
Aixia Sun Lab Director/Principal Scientist
D.H.Sc., M.Sc., B.Sc., MT (AAB)

Definitions are found on page 1
This report shall not be reproduced, without written approval, from ACS Laboratory. The results of this report relate only to the material or product analyzed. Test results are confidential unless explicitly waived otherwise. ACS Laboratory is accredited to the ISO/IEC 17025:2017 Standard. The scope of this analysis is limited to the parameters listed in this COA. Testing for food additives (e.g., preservatives, colorant, flavor enhancers) was not conducted. Therefore, no conclusions should be drawn regarding the presence or absence of such additives. The current and valid permit number for the facility issued by a human health or food safety regulatory entity with authority over the facility is stated above, and that the facility meets the human health or food safety sanitization requirements of the regulatory entity as documented by the regulatory entity and evidenced by the valid permit number

