



Certificate of Analysis

CANNABUSINESS LABORATORIES, LLC

Customer:

Cornbread Hemp
4612 Schuff Ave

Louisville, KY 40213 / P_2399

Received Date **3/28/2025**

COA Released **4/2/2025**

Comments

Sample ID **250328001**

Order Number **CB250328001**

Sample Name **Full Spectrum Sleep CBD
Gummies 3000mg**

External Sample ID **1181**

Batch Number **03262532**

Product Type **Edible**

Sample Type **Edible**

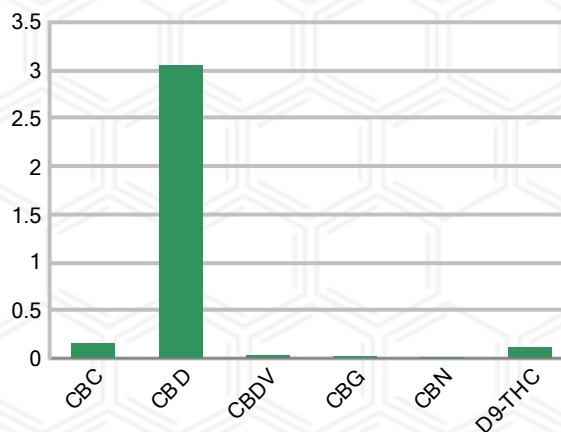
CANNABINOID PROFILE (Product Size = 3.352 g)

Analyte	LOQ (%)	% Weight	mg/g	mg/unit
CBC	0.01	0.153	1.527	5.12
CBD	0.01	3.049	30.49	102.20
CBDa	0.01	ND	ND	ND
CBDV	0.01	0.028	0.275	0.92
CBG	0.01	0.022	0.222	0.74
CBGa	0.01	ND	ND	ND
CBN	0.01	0.010	0.103	0.35
d8-THC	0.01	ND	ND	ND
d9-THC	0.01	0.113	1.132	3.79
THCa	0.01	ND	ND	ND
Total Cannabinoids		3.375	33.75	113.10
Total Potential THC		0.113	1.132	3.79
Total Potential CBD		3.049	30.49	102.20
Total Potential CBG		0.022	0.222	0.74
Ratio of Total Potential CBD to Total Potential THC				26.98 : 1
Ratio of Total Potential CBG to Total Potential THC				0.20 : 1

SAMPLE IMAGE



CANNABINOIDS % Weight



*Total Cannabinoids refers to the sum of all cannabinoids detected.

*Total Potential CBD = (0.877 x CBDa) + CBD. *Total Potential THC = (0.877 x THCa) + THC. *Total Potential CBG = (0.877 x CBGa) + CBG.

*Total Potential THC/CBD are calculated to take into account the loss of an acid group during decarboxylation.



Laboratory Manager

SIGNATURE

Jamie Hobgood

LABORATORY MANAGER

04/02/2025 4:02 PM

DATE

This product has been tested by CannaBusiness Laboratories using validated testing methodologies and a quality system. Values reported relate only to the product tested. CannaBusiness Laboratories makes no claims as to the efficacy, safety, or other risks associated with any detected or non-detected levels of any compounds reported herein. This Certificate shall not be reproduced except in full, without the written permission of CannaBusiness Laboratories. Photo is of sample received by the lab and may vary from final packaging. The results apply to the sample as received.



Certificate of Analysis

CANNABUSINESS LABORATORIES, LLC

Customer

Cornbread Hemp

4612 Schuff Ave

Louisville, KY 40213 / P_2399



Sample Name: Full Spectrum Sleep CBD Gummies 3000mg

Sample ID: 250328001

Order Number: CB250328001

Product Type: Edible

Sample Type: Edible

Received Date: 03/28/2025

Batch Number: 03262532

COA released: 04/02/2025 4:02 PM

Potency (mg/g)

Date Tested: 03/28/2025

Method: CB-SOP-028

Instrument:

0.113 %	3.049 %	3.375 %	33.75 mg/g
Total THC	Total CBD	Total Cannabinoids	Total Cannabinoids

Analyte	Result	Units	LOQ	Result	Units
CBC (Cannabichromene)	0.153	%	0.010	1.527	mg/g
CBD (Cannabidiol)	3.049	%	0.010	30.49	mg/g
CBDa (Cannabidiolic Acid)	ND	%	0.010	ND	mg/g
CBDV (Cannabidivarin)	0.028	%	0.010	0.275	mg/g
CBG (Cannabigerol)	0.022	%	0.010	0.222	mg/g
CBGa (Cannabigerolic Acid)	ND	%	0.010	ND	mg/g
CBN (Cannabinol)	0.010	%	0.010	0.103	mg/g
D8-THC (D8-Tetrahydrocannabinol)	ND	%	0.010	ND	mg/g
D9-THC (D9-Tetrahydrocannabinol)	0.113	%	0.010	1.132	mg/g
THCa (Tetrahydrocannabinolic Acid)	ND	%	0.010	ND	mg/g

Terpenoids

Date Tested: 03/31/2025

Method: CB-SOP-026

Instrument:

Analyte	Result	Unit	LOQ	Result	Unit
alpha-Bisabolol	<LOQ	mg/g	0.100	<LOQ	%
alpha-humulene	<LOQ	mg/g	0.100	<LOQ	%
alpha-pinene	<LOQ	mg/g	0.100	<LOQ	%
alpha-terpinene	<LOQ	mg/g	0.100	<LOQ	%
beta-caryophyllene	<LOQ	mg/g	0.100	<LOQ	%
Beta-myrcene	<LOQ	mg/g	0.100	<LOQ	%
Beta-pinene	<LOQ	mg/g	0.100	<LOQ	%
cis-Nerolidol	<LOQ	mg/g	0.100	<LOQ	%
Camphene	<LOQ	mg/g	0.100	<LOQ	%
d-Limonene	<LOQ	mg/g	0.100	<LOQ	%
delta-3-Carene	<LOQ	mg/g	0.100	<LOQ	%
Eucalyptol	<LOQ	mg/g	0.100	<LOQ	%
gamma-Terpinene	<LOQ	mg/g	0.100	<LOQ	%
Geraniol	<LOQ	mg/g	0.100	<LOQ	%
Guaiol	<LOQ	mg/g	0.100	<LOQ	%
Isopulegol	<LOQ	mg/g	0.100	<LOQ	%
Linalool	<LOQ	mg/g	0.100	<LOQ	%
Ocimene (mixture of isomers)	<LOQ	mg/g	0.100	<LOQ	%
p-Isopropyltoluene (p-Cymene)	<LOQ	mg/g	0.100	<LOQ	%
trans-beta-Ocimene	<LOQ	mg/g	0.100	<LOQ	%
trans-Nerolidol	<LOQ	mg/g	0.100	<LOQ	%
Terpinolene	<LOQ	mg/g	0.100	<LOQ	%

Pesticides

Date Tested: 03/29/2025

Method: CB-SOP-025

Instrument:

Analyte	Result	Units	LOQ	Result	Analyte	Result	Units	LOQ	Result
Azoxystrobin	ND	ppm	0.010		Bifenazate	ND	ppm	0.010	
Bifenthrin	ND	ppm	0.100		Boscalid	ND	ppm	0.010	
Carbaryl	ND	ppm	0.010		Carbofuran	ND	ppm	0.010	
Chlorantraniliprole	ND	ppm	0.010		Chlorpyrifos	ND	ppm	0.010	
Clofentezine	ND	ppm	0.010		Coumaphos	ND	ppm	0.010	
Daminozide	ND	ppm	0.010		Diazinon	ND	ppm	0.010	
Dichlorvos	ND	ppm	0.100		Dimethoate	ND	ppm	0.010	
Etofenprox	ND	ppm	0.010		Etoxazole	ND	ppm	0.010	
Fenhexamid	ND	ppm	0.010		Fenoxycarb	ND	ppm	0.010	
Fenpyroximate	ND	ppm	0.010		Fipronil	ND	ppm	0.010	
Flonicamid	ND	ppm	0.100		Fludioxonil	NT	ppm	0.010	
Hexythiazox	ND	ppm	0.010		Imazalil	ND	ppm	0.010	
Imidacloprid	ND	ppm	0.010		Malathion	ND	ppm	0.010	
Metalaxyl	ND	ppm	0.010		Methiocarb	ND	ppm	0.010	
Methomyl	ND	ppm	0.010		Myclobutanil	ND	ppm	0.010	

NT = Not tested, ND = Not detected; LOQ = Limit of Quantitation; <LOQ = Detected; >ULOL = Above upper limit of linearity; CFU/g = Colony forming units per 1 gram; TNTC = Too numerous to count

This product has been tested by CannaBusiness Laboratories using validated testing methodologies and a quality system. Values reported relate only to the product tested. CannaBusiness Laboratories makes no claims as to the efficacy, safety, or other risks associated with any detected or non-detected levels of any compounds reported herein. This Certificate shall not be reproduced except in full, without the written permission of CannaBusiness Laboratories. Photo is of sample received by the lab and may vary from final packaging. The results apply to the sample as received.



Certificate of Analysis

CANNABUSINESS LABORATORIES, LLC

Pesticides							
Date Tested: 03/29/2025		Method: CB-SOP-025		Instrument:			

Analyte	Result	Units	LOQ	Result	Analyte	Result	Units	LOQ	Result
Naled	ND	ppm	0.010		Oxamyl	ND	ppm	0.010	
Paclobutrazol	ND	ppm	0.010		Phosmet	ND	ppm	0.010	
Prallethrin	ND	ppm	0.010		Propiconazole	ND	ppm	0.010	
Propoxur	ND	ppm	0.010		Pyrethrin I	ND	ppm	0.010	
Pyrethrin II	ND	ppm	0.010		Pyridaben	ND	ppm	0.010	
Spinetoram	ND	ppm	0.010		Spiromesifen	ND	ppm	0.010	
Spirotetramat	ND	ppm	0.010		Tebuconazole	ND	ppm	0.010	
Thiacloprid	ND	ppm	0.010		Thiamethoxam	ND	ppm	0.010	
Trifloxystrobin	ND	ppm	0.010		Ethoprophos	ND	ppm	0.010	
Kresoxym-methyl	ND	ppm	0.010		Permethrins	ND	ppm	0.010	
Piperonyl Butoxide	ND	ppm	0.010		Spinosyn A	ND	ppm	0.010	
Spiroxamine-1	ND	ppm	0.010		AbamectinB1a	ND	ppm	0.010	
Spinosyn D	ND	ppm	0.010		Acephate	ND	ppm	0.010	
Acetamiprid	ND	ppm	0.010		Aldicarb	ND	ppm	0.010	

Mycotoxins							
Date Tested: 03/29/2025		Method: CB-SOP-025		Instrument:			

Analyte	Result	Units	LOQ	Result	Analyte	Result	Units	LOQ	Result
Ochratoxin A	ND	ppm	0.010		Aflatoxin B1	ND	ppm	0.010	
Aflatoxin G2	ND	ppm	0.010		Aflatoxin B2	ND	ppm	0.010	
Aflatoxin G1	ND	ppm	0.010						

Metals							
Date Tested: 04/01/2025		Method: CB-SOP-027		Instrument:			

Analyte	Result	Units	LOQ	Result	Analyte	Result	Units	LOQ	Result
Arsenic	<LOQ	ppm	0.500		Cadmium	<LOQ	ppm	0.500	
Lead	<LOQ	ppm	0.500		Mercury	<LOQ	ppm	3.000	

Microbial							
Date Tested: 04/02/2025		Method:		Instrument:			

Analyte	Result	Units	LOQ	Result	Analyte	Result	Units	LOQ	Result
STEC (E. coli)	Negative				Salmonella	Negative			
L. monocytogenes	Negative				Yeast/Mold (qPCR)	Absence			

Residual Solvent							
Date Tested: 03/29/2025		Method: CB-SOP-032		Instrument:			

Analyte	Result	Units	LOQ	Result	Analyte	Result	Units	LOQ	Result
1-4 Dioxane	<LOQ	ppm	29		2-Butanol	<LOQ	ppm	175	
2-Ethoxyethanol	<LOQ	ppm	24		2-Methylpentane	<LOQ	ppm	87	
3-Methylpentane	<LOQ	ppm	87		2-Propanol	<LOQ	ppm	350	
Cyclohexane	<LOQ	ppm	146		Ether	<LOQ	ppm	350	
Ethylbenzene	<LOQ	ppm	81		Acetone	<LOQ	ppm	350	
Isopropyl Acetate	<LOQ	ppm	175		Methylbutane	<LOQ	ppm	350	
n-Heptane	<LOQ	ppm	350		n-Hexane	<LOQ	ppm	87	
n-Pentane	<LOQ	ppm	350		Tetrahydrofuran	<LOQ	ppm	54	
Acetonitrile	<LOQ	ppm	123		Ethanol	<LOQ	ppm	2000	
Ethyl acetate	<LOQ	ppm	175		o-Xylene	<LOQ	ppm	81	
m+p-Xylene	<LOQ	ppm	163		Methanol	<LOQ	ppm	250	
Methylene Chloride	<LOQ	ppm	90		Toluene	<LOQ	ppm	67	

NT = Not tested, ND = Not detected; LOQ = Limit of Quantitation; <LOQ = Detected; >ULOL = Above upper limit of linearity; CFU/g = Colony forming units per 1 gram; TNTC = Too numerous to count

This product has been tested by CannaBusiness Laboratories using validated testing methodologies and a quality system. Values reported relate only to the product tested. CannaBusiness Laboratories makes no claims as to the efficacy, safety, or other risks associated with any detected or non-detected levels of any compounds reported herein. This Certificate shall not be reproduced except in full, without the written permission of CannaBusiness Laboratories. Photo is of sample received by the lab and may vary from final packaging. The results apply to the sample as received.



Certificate of Analysis

CANNABUSINESS LABORATORIES, LLC



J. Hobgood
Laboratory Manager

Jamie Hobgood

04/02/2025 4:03 PM

SIGNATURE

DATE

NT = Not tested, ND = Not detected; LOQ = Limit of Quantitation; <LOQ = Detected; >ULOL = Above upper limit of linearity; CFU/g = Colony forming units per 1 gram; TNTC = Too numerous to count

This product has been tested by CannaBusiness Laboratories using validated testing methodologies and a quality system. Values reported relate only to the product tested. CannaBusiness Laboratories makes no claims as to the efficacy, safety, or other risks associated with any detected or non-detected levels of any compounds reported herein. This Certificate shall not be reproduced except in full, without the written permission of CannaBusiness Laboratories. Photo is of sample received by the lab and may vary from final packaging. The results apply to the sample as received.