

CONSOLIDATED TEST RESULTS SUMMARY

Please see the following pages for full test results.

BULK SKU	BATCH #	LOQ: Limit Of Quantitation LOD: Limit Of Detection 1 g = 10 ⁻³ kg = 10 ³ mg = 10 ⁶ µg 1 mg/kg = 1 ppm = 1000 ppb
PRODUCT NAME	SERVING SIZE	
LABORATORY :	OREGON ACCREDITATION: OR100028	

POTENCY	PER SERVING	PER GRAM	Percent
Cannabidiol (CBD)	mg/serving	mg/g	%
Total THC (d9-THC, THCA)	mg/serving	mg/g	%
Cannabigerol (CBG)	mg/serving	mg/g	%
Cannabinol (CBN)	mg/serving	mg/g	%
Cannabichromene (CBC)	mg/serving	mg/g	%
Tetrahydrocannabinolic Acid (THCA)	mg/serving	mg/g	%
Delta-9-THC (d9-THC)	mg/serving	mg/g	%
Delta-8-THC (d8-THC)	mg/serving	mg/g	%

HEAVY METALS	PER SERVING	PER GRAM	REGULATORY ACTION LEVEL
Arsenic	µg/serving	µg/g	10 µg/day ^[1]
Cadmium	µg/serving	µg/g	4.1 µg/day ^[1]
Lead	µg/serving	µg/g	3.5 µg/day ^[2]
Mercury	µg/serving	µg/g	2 µg/day ^[1]

PESTICIDES	REGULATORY ACTION LEVEL
None of the other 59 pesticides tested found above limit of detection in the sample.	10 ppb ^[1]

RESIDUAL SOLVENTS	Results
Ethanol	
Heptane	
None of the 34 residual solvents tested found above limit of quantitation in the sample.	

MICROBIAL	PASS/FAIL
Yeast & Mold	Pass
Coliform	Pass
Water Activity	Pass

TERPENES	% OF SAMPLE
β-Caryophyllene	%
α-Bisabolol	%
Humulene	%
Caryophyllene Oxide	%



1. American Herbal Pharmacopoeia. (2014). Cannabis Inflorescence: Standards of Identity, Analysis, and Quality Control. Washington DC: AHP.

2. US Food and Drug Administration. (2019). Lead in Food, Foodwares, and Dietary Supplements. Washington DC: FDA. US Food and Drug Administration. (2019). Lead in Food, Foodwares, and Dietary Supplements. Washington DC: FDA.



12423 NE Whitaker Way
 Portland, OR 97230
 503-254-1794



Report Number: 21-009134/D002.R000
Report Date: 08/13/2021
ORELAP#: OR100028
Purchase Order:
Received: 08/09/21 16:00

Customer: Etz Hayim Holdings
Product identity: FORM-DG55-SG100
Client/Metric ID: .
Laboratory ID: 21-009134-0001

Sample Date: 07/20/21 13:55

Summary

Potency:

Analyte per 1ml	Result	Limits	Units	Status	
CBD per 1ml [†]	2.41		mg/1ml		CBD-Total per 1ml 280 mg/1ml
CBD per 1ml	280		mg/1ml		
CBDV per 1ml [†]	0.990		mg/1ml		THC-Total per 1ml 2.84 mg/1ml
CBE per 1ml [†]	1.57		mg/1ml		
CBG per 1ml [†]	1.73		mg/1ml		
CBT per 1ml [†]	4.20		mg/1ml		
Δ9-THC per 1ml	2.84		mg/1ml		(Reported in milligrams per serving)



12423 NE Whitaker Way
 Portland, OR 97230
 503-254-1794

Report Number: 21-009134/D002.R000
Report Date: 08/13/2021
ORELAP#: OR100028
Purchase Order:
Received: 08/09/21 16:00



Customer: Etz Hayim Holdings
 16427 NE Airport Way
 PORTLAND 97230
 United States of America (USA)

Product identity: FORM-DG55-SG100

Client/Metric ID: .

Sample Date: 07/20/21 13:55

Laboratory ID: 21-009134-0001

Evidence of Cooling: No

Temp: 26.3 °C

Relinquished by: T. Ashmore

Serving Size #1: 0.943 g

Density: 0.9430 g/ml

Sample Results

Potency per 1ml	Method J AOAC 2015 V98-6 (mod)Units mg/se	Batch: 2107157	Analyze: 8/11/21 2:19:00 AM		
Analyte	Result	Limits	Units	LOQ	Notes
CBC per 1ml [†]	2.41		mg/1ml	0.813	
CBC-A per 1ml [†]	< LOQ		mg/1ml	0.813	
CBC-Total per 1ml [†]	2.41		mg/1ml	1.53	
CBD per 1ml	280		mg/1ml	8.13	
CBD-A per 1ml	< LOQ		mg/1ml	0.813	
CBD-Total per 1ml	280		mg/1ml	8.84	
CBDV per 1ml [†]	0.990		mg/1ml	0.813	
CBDV-A per 1ml [†]	< LOQ		mg/1ml	0.813	
CBDV-Total per 1ml [†]	< LOQ		mg/1ml	1.52	
CBE per 1ml [†]	1.57		mg/1ml	0.813	
CBG per 1ml [†]	1.73		mg/1ml	0.813	
CBG-A per 1ml [†]	< LOQ		mg/1ml	0.813	
CBG-Total per 1ml [†]	1.73		mg/1ml	1.52	
CBL per 1ml [†]	< LOQ		mg/1ml	0.813	
CBL-A per 1ml [†]	< LOQ		mg/1ml	0.813	
CBL-Total per 1ml [†]	< LOQ		mg/1ml	1.53	
CBN per 1ml	< LOQ		mg/1ml	0.813	
CBT per 1ml [†]	4.20		mg/1ml	0.813	
Δ8-THCV per 1ml [†]	< LOQ		mg/1ml	0.813	
Δ8-THC per 1ml [†]	< LOQ		mg/1ml	0.813	
Δ9-THC per 1ml	2.84		mg/1ml	0.813	
exo-THC per 1ml [†]	< LOQ		mg/1ml	0.813	
THC-A per 1ml	< LOQ		mg/1ml	0.813	
THC-Total per 1ml	2.84		mg/1ml	1.53	
THCV per 1ml [†]	< LOQ		mg/1ml	0.813	
THCV-A per 1ml [†]	< LOQ		mg/1ml	0.813	
THCV-Total per 1ml [†]	< LOQ		mg/1ml	1.53	
Total Cannabinoids per 1ml	294		mg/1ml		



12423 NE Whitaker Way
Portland, OR 97230
503-254-1794



Report Number: 21-009134/D004.R000
Report Date: 08/20/2021
ORELAP#: OR100028
Purchase Order:
Received: 08/09/21 16:00

Customer: Etz Hayim Holdings
Product identity: FORM-DG55-SG100
Client/Metric ID: .
Laboratory ID: 21-009134-0003

Sample Date: 07/20/21 13:55

Summary

Residual Solvents:

All analytes passing and less than LOQ.

Pesticides:

All analytes passing and less than LOQ.

Terpenes:

Analyte	Percent by weight	Percent of Total	Analyte	Percent by weight	Percent of Total
(R)-(+)-Limonene [†]	9.08	56.75%	β-Myrcene [†]	4.72	29.50%
β-Caryophyllene [†]	1.89	11.81%	Humulene [†]	0.143	0.89%
α-Bisabolol [†]	0.0476	0.30%	(-)-caryophyllene oxide [†]	0.0461	0.29%
d-3-Carene [†]	0.0353	0.22%	α-Terpinene [†]	0.0204	0.13%
Total Terpenes[†]	16.0	100.00%			

Metals:

Less than LOQ for all analytes.



12423 NE Whitaker Way
 Portland, OR 97230
 503-254-1794



Report Number: 21-009134/D004.R000
Report Date: 08/20/2021
ORELAP#: OR100028
Purchase Order:
Received: 08/09/21 16:00

Customer: Etz Hayim Holdings
 16427 NE Airport Way
 PORTLAND 97230
 United States of America (USA)

Product identity: FORM-DG55-SG100

Client/Metric ID: .

Sample Date: 07/20/21 13:55

Laboratory ID: 21-009134-0003

Evidence of Cooling: No

Temp: 26.3 °C

Relinquished by: T. Ashmore

Sample Results

Solvents		Method Residual Solvents by GC/MS				Units µg/g	Batch 2107096	Analyze 08/13/21 03:12 PM			
Analyte	Result	Limits	LOQ	Status	Notes	Analyte	Result	Limits	LOQ	Status	Notes
1,4-Dioxane	< LOQ	380	100	pass		2-Butanol	< LOQ	5000	200	pass	
2-Ethoxyethanol	< LOQ	160	30.0	pass		2-Methylbutane	< LOQ		200		
2-Methylpentane	< LOQ		30.0			2-Propanol (IPA)	< LOQ	5000	200	pass	
2,2-Dimethylbutane	< LOQ		30.0			2,2-Dimethylpropane	< LOQ		200		
2,3-Dimethylbutane	< LOQ		30.0			3-Methylpentane	< LOQ		30.0		
Acetone	< LOQ	5000	200	pass		Acetonitrile	< LOQ	410	100	pass	
Benzene	< LOQ	2.00	1.00	pass		Butanes (sum)	< LOQ	5000	400	pass	
Cyclohexane	< LOQ	3880	200	pass		Ethyl acetate	< LOQ	5000	200	pass	
Ethyl benzene	< LOQ		200			Ethyl ether	< LOQ	5000	200	pass	
Ethylene glycol	< LOQ	620	200	pass		Ethylene oxide	< LOQ	50.0	20.0	pass	
Hexanes (sum)	< LOQ	290	150	pass		Isopropyl acetate	< LOQ	5000	200	pass	
Isopropylbenzene	< LOQ	70.0	30.0	pass		m,p-Xylene	< LOQ		200		
Methanol	< LOQ	3000	200	pass		Methylene chloride	< LOQ	600	60.0	pass	
Methylpropane	< LOQ		200			n-Butane	< LOQ		200		
n-Heptane	< LOQ	5000	200	pass		n-Hexane	< LOQ		30.0		
n-Pentane	< LOQ		200			o-Xylene	< LOQ		200		
Pentanes (sum)	< LOQ	5000	600	pass		Propane	< LOQ	5000	200	pass	
Tetrahydrofuran	< LOQ	720	100	pass		Toluene	< LOQ	890	100	pass	
Total Xylenes	< LOQ		400			Total Xylenes and Ethyl	< LOQ	2170	600	pass	



12423 NE Whitaker Way
 Portland, OR 97230
 503-254-1794



Report Number: 21-009134/D004.R000
Report Date: 08/20/2021
ORELAP#: OR100028
Purchase Order:
Received: 08/09/21 16:00

Pesticides											
Method AOAC 2007.01 & EN 15662 (mod) Units mg/kg Batch 2107154 Analyze 08/16/21 03:06 PM											
Analyte	Result	Limits	LOQ	Status	Notes	Analyte	Result	Limits	LOQ	Status	Notes
Abamectin	< LOQ	0.50	0.250	pass		Acephate	< LOQ	0.40	0.250	pass	
Acequinocyl	< LOQ	2.0	1.00	pass		Acetamiprid	< LOQ	0.20	0.100	pass	
Aldicarb	< LOQ	0.40	0.200	pass		Azoxystrobin	< LOQ	0.20	0.100	pass	
Bifenazate	< LOQ	0.20	0.100	pass		Bifenthrin	< LOQ	0.20	0.100	pass	
Boscalid	< LOQ	0.40	0.200	pass		Carbaryl	< LOQ	0.20	0.100	pass	
Carbofuran	< LOQ	0.20	0.100	pass		Chlorantraniliprole	< LOQ	0.20	0.100	pass	
Chlorfenapyr	< LOQ	1.0	0.500	pass		Chlorpyrifos	< LOQ	0.20	0.100	pass	
Clofentezine	< LOQ	0.20	0.100	pass		Cyfluthrin	< LOQ	1.0	0.500	pass	
Cypermethrin	< LOQ	1.0	0.500	pass		Daminozide	< LOQ	1.0	0.500	pass	
Diazinon	< LOQ	0.20	0.100	pass		Dichlorvos	< LOQ	1.0	0.500	pass	
Dimethoate	< LOQ	0.20	0.100	pass		Ethoprophos	< LOQ	0.20	0.100	pass	
Etofenprox	< LOQ	0.40	0.200	pass		Etoxazole	< LOQ	0.20	0.100	pass	
Fenoxycarb	< LOQ	0.20	0.100	pass		Fenpyroximate	< LOQ	0.40	0.200	pass	
Fipronil	< LOQ	0.40	0.200	pass		Fonicamid	< LOQ	1.0	0.400	pass	
Fludioxonil	< LOQ	0.40	0.200	pass		Hexythiazox	< LOQ	1.0	0.400	pass	
Imazalil	< LOQ	0.20	0.100	pass		Imidacloprid	< LOQ	0.40	0.200	pass	
Kresoxim-methyl	< LOQ	0.40	0.200	pass		Malathion	< LOQ	0.20	0.100	pass	
Metalaxyl	< LOQ	0.20	0.100	pass		Methiocarb	< LOQ	0.20	0.100	pass	
Methomyl	< LOQ	0.40	0.200	pass		MGK-264	< LOQ	0.20	0.100	pass	
Myclobutanil	< LOQ	0.20	0.100	pass		Naled	< LOQ	0.50	0.250	pass	
Oxamyl	< LOQ	1.0	0.500	pass		Paclobutrazole	< LOQ	0.40	0.200	pass	
Parathion-Methyl	< LOQ	0.20	0.200	pass		Permethrin	< LOQ	0.20	0.100	pass	
Phosmet	< LOQ	0.20	0.100	pass		Piperonyl butoxide	< LOQ	2.0	1.00	pass	
Prallethrin	< LOQ	0.20	0.200	pass		Propiconazole	< LOQ	0.40	0.200	pass	
Propoxur	< LOQ	0.20	0.100	pass		Pyrethrin I (total)	< LOQ	1.0	0.500	pass	
Pyridaben	< LOQ	0.20	0.100	pass		Spinosad	< LOQ	0.20	0.100	pass	
Spiromesifen	< LOQ	0.20	0.100	pass		Spirotetramat	< LOQ	0.20	0.100	pass	
Spiroxamine	< LOQ	0.40	0.200	pass		Tebuconazole	< LOQ	0.40	0.200	pass	
Thiacloprid	< LOQ	0.20	0.100	pass		Thiamethoxam	< LOQ	0.20	0.100	pass	
Trifloxystrobin	< LOQ	0.20	0.100	pass							

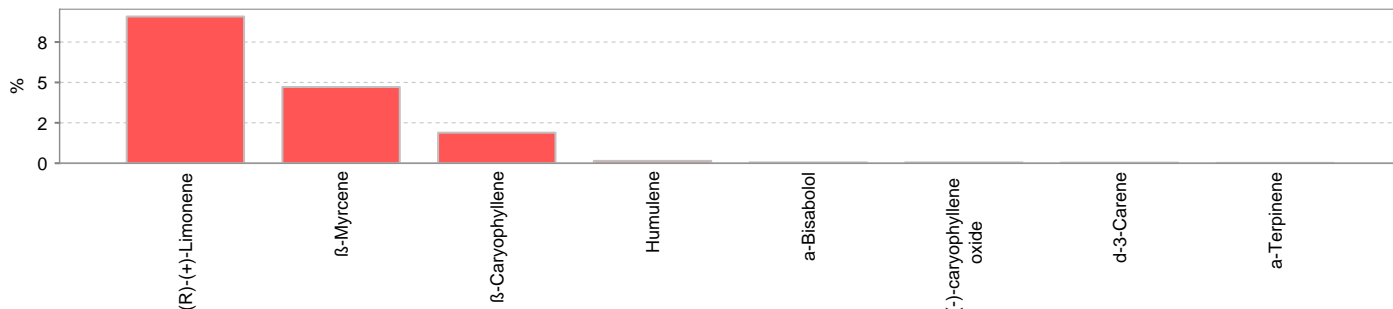


12423 NE Whitaker Way
Portland, OR 97230
503-254-1794

Report Number: 21-009134/D004.R000
Report Date: 08/20/2021
ORELAP#: OR100028
Purchase Order:
Received: 08/09/21 16:00



Terpenes				Method J AOAC 2015 V98-6	Units %	Batch 2107426	Analyze 08/19/21 12:34 AM		
Analyte	Result	LOQ	% of Total	Notes	Analyte	Result	LOQ	% of Total	Notes
(R)-(+)-Limonene [†]	9.08	0.195	56.75%		β-Myrcene [†]	4.72	0.019	29.50%	
β-Caryophyllene [†]	1.89	0.019	11.81%		Humulene [†]	0.143	0.019	0.89%	
α-Bisabolol [†]	0.0476	0.019	0.30%		(-)-caryophyllene oxide [†]	0.0461	0.019	0.29%	
d-3-Carene [†]	0.0353	0.019	0.22%		α-Terpinene [†]	0.0204	0.019	0.13%	
Geraniol [†]	< LOQ	0.019	0.00%		farnesene [†]	< LOQ	0.019	0.00%	
Terpinolene [†]	< LOQ	0.019	0.00%		Sabinene [†]	< LOQ	0.019	0.00%	
p-Cymene [†]	< LOQ	0.019	0.00%		(-)-Guaiol [†]	< LOQ	0.019	0.00%	
Linalool [†]	< LOQ	0.019	0.00%		trans-β-Ocimene [†]	< LOQ	0.013	0.00%	
(-)-α-Terpineol [†]	< LOQ	0.019	0.00%		(+)-Pulegone [†]	< LOQ	0.019	0.00%	
Sabinene hydrate [†]	< LOQ	0.019	0.00%		(+)-Cedrol [†]	< LOQ	0.019	0.00%	
(-)-β-Pinene [†]	< LOQ	0.019	0.00%		α-pinene [†]	< LOQ	0.019	0.00%	
Menthol [†]	< LOQ	0.019	0.00%		(±)-trans-Nerolidol [†]	< LOQ	0.019	0.00%	
(+)-Borneol [†]	< LOQ	0.019	0.00%		(±)-fenchone [†]	< LOQ	0.019	0.00%	
(±)-Camphor [†]	< LOQ	0.019	0.00%		(-)-Isopulegol [†]	< LOQ	0.019	0.00%	
(+)-fenchol [†]	< LOQ	0.019	0.00%		(±)-cis-Nerolidol [†]	< LOQ	0.019	0.00%	
α-cedrene [†]	< LOQ	0.019	0.00%		α-phellandrene [†]	< LOQ	0.019	0.00%	
Camphene [†]	< LOQ	0.019	0.00%		cis-β-Ocimene [†]	< LOQ	0.006	0.00%	
Eucalyptol [†]	< LOQ	0.019	0.00%		γ-Terpinene [†]	< LOQ	0.019	0.00%	
Geranyl acetate [†]	< LOQ	0.019	0.00%		Isoborneol [†]	< LOQ	0.019	0.00%	
nerol [†]	< LOQ	0.019	0.00%		valencene [†]	< LOQ	0.019	0.00%	
Total Terpenes	16.0								



Metals									
Analyte	Result	Limits	Units	LOQ	Batch	Analyze	Method	Status	Notes
Arsenic	< LOQ		mg/kg	0.0489	2107448	08/19/21	AOAC 2013.06 (mod.)		X
Cadmium	< LOQ		mg/kg	0.0489	2107448	08/19/21	AOAC 2013.06 (mod.)		X
Lead	< LOQ		mg/kg	0.0489	2107448	08/19/21	AOAC 2013.06 (mod.)		X
Mercury	< LOQ		mg/kg	0.0245	2107448	08/19/21	AOAC 2013.06 (mod.)		X