

CONSOLIDATED TEST RESULTS SUMMARY

Please see the following pages for full test results.

BULK SKU TN.O.CBGCBD.FS50

BATCH # ED03(A)

PRODUCT NAME CBG:CBD 1:1 Oil Tincture

SERVING SIZE 1 mL

LABORATORY: Columbia Laboratory

OREGON ACCREDITATION: OR100028

LOQ: Limit Of Quantitation

LOD: Limit Of Detection

1 g = 10⁻³ kg = 10³ mg = 10⁶

µg 1 mg/kg = 1 ppm = 1000 ppb

POTENCY	PER SERVING	PER GRAM	Percent
Cannabidiol (CBD)	25.39 mg/serving	27.30 mg/g	2.73 %
Total THC (d9-THC, THCA)	1.13 mg/serving	1.21 mg/g	0.12 %
Cannabigerol (CBG)	25.39 mg/serving	27.30 mg/g	2.73 %
Cannabinol (CBN)	0.04 mg/serving	0.04 mg/g	0.004 %
Cannabichromene (CBC)	1.87 mg/serving	2.01 mg/g	0.20 %
Tetrahydrocannabinolic Acid (THCA)	<LOQ mg/serving	<LOQ mg/g	<LOQ %
Delta-9-THC (d9-THC)	1.13 mg/serving	1.21 mg/g	0.12 %
Delta-8-THC (d8-THC)	<LOQ mg/serving	<LOQ mg/g	<LOQ %

HEAVY METALS	PER SERVING	PER GRAM	REGULATORY ACTION LEVEL
Arsenic	<LOQ µg/serving	<LOQ µg/g	10 µg/day ^[1]
Cadmium	<LOQ µg/serving	<LOQ µg/g	4.1 µg/day ^[1]
Lead	<LOQ µg/serving	<LOQ µg/g	3.5 µg/day ^[2]
Mercury	<LOQ µg/serving	<LOQ µg/g	2 µg/day ^[1]

PESTICIDES	REGULATORY ACTION LEVEL
None of the other 59 pesticides tested found above limit of detection in the sample.	10 ppb ^[1]

RESIDUAL SOLVENTS	Results	REGULATORY ACTION LEVEL
Ethanol	<LOQ	50,000 mg/day
Heptane	<LOQ	50,000 mg/day
None of the 34 residual solvents tested found above limit of quantitation in the sample.		

MICROBIAL	PASS/FAIL
Yeast & Mold	Pass
Coliform	Pass

TERPENES	% OF SAMPLE
Farnesene	27.15 %
β-Caryophyllene	24.54 %
α-Bisabolol	12.81 %
Guaiol	6.39 %
Humulene	11.32 %
Caryophyllene Oxide	9.44 %



1. American Herbal Pharmacopoeia. (2014). Cannabis Inflorescence: Standards of Identity, Analysis, and Quality Control. Washington DC: AHP.

2. US Food and Drug Administration. (2019). Lead in Food, Foodwares, and Dietary Supplements. Washington DC: FDA. US Food and Drug Administration. (2019). Lead in Food, Foodwares, and Dietary Supplements. Washington DC: FDA.



12423 NE Whitaker Way
Portland, OR 97230
503-254-1794



Report Number: 22-005135/D004.R000
Report Date: 05/12/2022
ORELAP#: OR100028
Purchase Order:
Received: 05/04/22 15:52

Customer: Etz Hayim Holdings
Product identity: FORM-ED03(A)-TN.O.CBGCBD.FS50
Client/Metric ID: .
Laboratory ID: 22-005135-0001

Summary

Potency:

Analyte per 1g	Result	Limits	Units	Status	
CBC per 1g [†]	2.01		mg/1g		CBD-Total per 1g 27.3 mg/1g
CBD per 1g	27.3		mg/1g		
CBG per 1g [†]	27.3		mg/1g		THC-Total per 1g 1.21 mg/1g
CBN per 1g	0.0384		mg/1g		(Reported in milligrams per serving)
CBT per 1g [†]	0.651		mg/1g		
Δ9-THC per 1g	1.21		mg/1g		
THCV per 1g [†]	0.0503		mg/1g		

Residual Solvents:

All analytes passing and less than LOQ.

Pesticides:

All analytes passing and less than LOQ.

Terpenes:

Analyte	Percent by weight	Percent of Total	Analyte	Percent by weight	Percent of Total
farnesene [†]	0.0820	27.15%	β-Caryophyllene [†]	0.0741	24.54%
a-Bisabolol [†]	0.0387	12.81%	Humulene [†]	0.0342	11.32%
(-)-caryophyllene oxide [†]	0.0285	9.44%	β-Myrcene [†]	0.0247	8.18%
(-)-Guaiol [†]	0.0193	6.39%	Total Terpenes[†]	0.302	100.00%

Metals:

Less than LOQ for all analytes.

Microbiology:

Less than LOQ for all analytes.



12423 NE Whitaker Way
 Portland, OR 97230
 503-254-1794



Report Number: 22-005135/D004.R000
Report Date: 05/12/2022
ORELAP#: OR100028
Purchase Order:
Received: 05/04/22 15:52

Customer: Etz Hayim Holdings
 16427 NE Airport Way
 PORTLAND 97230
 United States of America (USA)

Product identity: FORM-ED03(A)-TN.O.CBGCBD.FS50

Client/Metric ID: .

Sample Date:

Laboratory ID: 22-005135-0001

Evidence of Cooling: No

Temp: 24.4 °C

Relinquished by: Client

Serving Size #1: 1 g

Sample Results

Potency per 1g					
Method J AOAC 2015 V98-6 (mod)Units mg/se Batch: 2203887 Analyze: 5/6/22 9:21:00 AM					
Analyte	Result	Limits	Units	LOQ	Notes
CBC per 1g†	2.01		mg/1g	0.0324	
CBC-A per 1g†	< LOQ		mg/1g	0.0324	
CBC-Total per 1g†	2.01		mg/1g	0.0609	
CBD per 1g	27.3		mg/1g	0.324	
CBD-A per 1g	< LOQ		mg/1g	0.0324	
CBD-Total per 1g	27.3		mg/1g	0.353	
CBDV per 1g†	< LOQ		mg/1g	0.0324	
CBDV-A per 1g†	< LOQ		mg/1g	0.0324	
CBDV-Total per 1g†	< LOQ		mg/1g	0.0605	
CBE per 1g†	< LOQ		mg/1g	0.0324	
CBG per 1g†	27.3		mg/1g	0.324	
CBG-A per 1g†	< LOQ		mg/1g	0.0324	
CBG-Total per 1g†	27.3		mg/1g	0.352	
CBL per 1g†	< LOQ		mg/1g	0.0324	
CBL-A per 1g†	< LOQ		mg/1g	0.0324	
CBL-Total per 1g†	< LOQ		mg/1g	0.0609	
CBN per 1g	0.0384		mg/1g	0.0324	
CBT per 1g†	0.651		mg/1g	0.0324	
Δ8-THCV per 1g†	< LOQ		mg/1g	0.0324	
Δ8-THC per 1g†	< LOQ		mg/1g	0.0324	
Δ9-THC per 1g	1.21		mg/1g	0.0324	
exo-THC per 1g†	< LOQ		mg/1g	0.0324	
THC-A per 1g	< LOQ		mg/1g	0.0324	
THC-Total per 1g	1.21		mg/1g	0.0609	
THCV per 1g†	0.0503		mg/1g	0.0324	
THCV-A per 1g†	< LOQ		mg/1g	0.0324	
THCV-Total per 1g†	< LOQ		mg/1g	0.0609	
Total Cannabinoids per 1g	58.6		mg/1g		



12423 NE Whitaker Way
 Portland, OR 97230
 503-254-1794



Report Number: 22-005135/D004.R000
Report Date: 05/12/2022
ORELAP#: OR100028
Purchase Order:
Received: 05/04/22 15:52

Microbiology

Analyte	Result	Limits	Units	LOQ	Batch	Analyze	Method	Status	Notes
E.coli	< LOQ		cfu/g	10	2203842	05/07/22	AOAC 991.14 (Petrifilm)	X, I	
Total Coliforms	< LOQ		cfu/g	10	2203842	05/07/22	AOAC 991.14 (Petrifilm)	X, I	
Mold (RAPID Petrifilm)	< LOQ		cfu/g	10	2203843	05/08/22	AOAC 2014.05 (RAPID)	X, I	
Yeast (RAPID Petrifilm)	< LOQ		cfu/g	10	2203843	05/08/22	AOAC 2014.05 (RAPID)	X, I	

Solvents Method Residual Solvents by GC/MS Units µg/g Batch 2204069 Analyze 05/12/22 08:59 AM

Analyte	Result	Limits	LOQ	Status	Notes	Analyte	Result	Limits	LOQ	Status	Notes
1,4-Dioxane	< LOQ	380	100	pass		2-Butanol	< LOQ	5000	200	pass	
2-Ethoxyethanol	< LOQ	160	30.0	pass		2-Methylbutane (Isopentane)	< LOQ		200		
2-Methylpentane	< LOQ		30.0			2-Propanol (IPA)	< LOQ	5000	200	pass	
2,2-Dimethyl butane	< LOQ		30.0			2,2-Dimethylpropane (neo-pentane)	< LOQ		200		
2,3-Dimethyl butane	< LOQ		30.0			3-Methylpentane	< LOQ		30.0		
Acetone	< LOQ	5000	200	pass		Acetonitrile	< LOQ	410	100	pass	
Benzene	< LOQ	2.00	1.00	pass		Butanes (sum)	< LOQ	5000	400	pass	
Cyclohexane	< LOQ	3880	200	pass		Ethanol ^l	< LOQ		200		
Ethyl acetate	< LOQ	5000	200	pass		Ethyl benzene	< LOQ		200		
Ethyl ether	< LOQ	5000	200	pass		Ethylene glycol	< LOQ	620	200	pass	
Ethylene oxide	< LOQ	50.0	20.0	pass		Hexanes (sum)	< LOQ	290	150	pass	
Isopropyl acetate	< LOQ	5000	200	pass		Isopropylbenzene (Cumene)	< LOQ	70.0	30.0	pass	
m,p-Xylene	< LOQ		200			Methanol	< LOQ	3000	200	pass	
Methylene chloride	< LOQ	600	60.0	pass		Methylpropane (Isobutane)	< LOQ		200		
n-Butane	< LOQ		200			n-Heptane	< LOQ	5000	200	pass	
n-Hexane	< LOQ		30.0			n-Pentane	< LOQ		200		
o-Xylene	< LOQ		200			Pentanes (sum)	< LOQ	5000	600	pass	
Propane	< LOQ	5000	200	pass		Tetrahydrofuran	< LOQ	720	100	pass	
Toluene	< LOQ	890	100	pass		Total Xylenes	< LOQ		400		
Total Xylenes and Ethyl benzene	< LOQ	2170	600	pass							



12423 NE Whitaker Way
 Portland, OR 97230
 503-254-1794

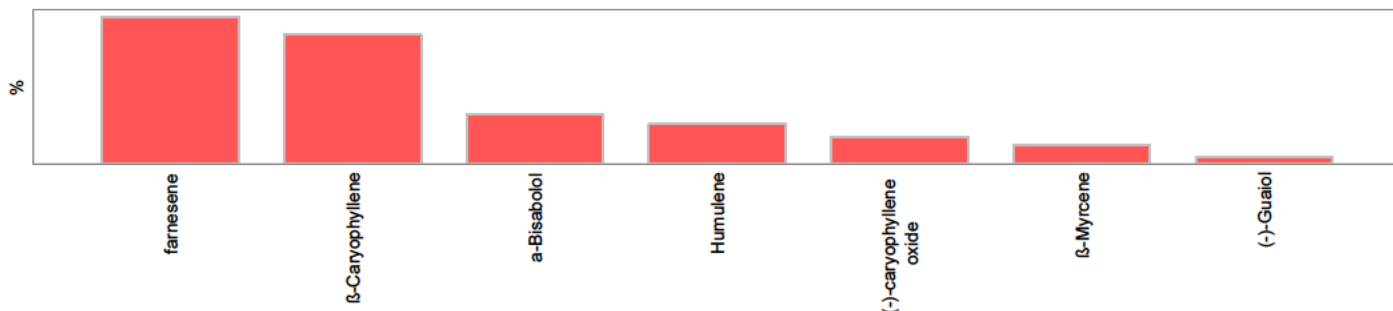


Report Number: 22-005135/D004.R000
Report Date: 05/12/2022
ORELAP#: OR100028
Purchase Order:
Received: 05/04/22 15:52

Pesticides											
Method AOAC 2007.01 & EN 15662 (mod) Units mg/kg Batch 2203921 Analyze 05/06/22 01:56 PM											
Analyte	Result	Limits	LOQ	Status	Notes	Analyte	Result	Limits	LOQ	Status	Notes
Abamectin	< LOQ	0.50	0.250	pass		Acephate	< LOQ	0.40	0.250	pass	
Acequinocyl	< LOQ	2.0	1.00	pass		Acetamiprid	< LOQ	0.20	0.100	pass	
Aldicarb	< LOQ	0.40	0.200	pass		Azoxystrobin	< LOQ	0.20	0.100	pass	
Bifenazate	< LOQ	0.20	0.100	pass		Bifenthrin	< LOQ	0.20	0.100	pass	
Boscalid	< LOQ	0.40	0.200	pass		Carbaryl	< LOQ	0.20	0.100	pass	
Carbofuran	< LOQ	0.20	0.100	pass		Chlorantraniliprole	< LOQ	0.20	0.100	pass	
Chlorfenapyr	< LOQ	1.0	0.500	pass		Chlorpyrifos	< LOQ	0.20	0.100	pass	
Clofentezine	< LOQ	0.20	0.100	pass		Cyfluthrin	< LOQ	1.0	0.500	pass	
Cypermethrin	< LOQ	1.0	0.500	pass		Daminozide	< LOQ	1.0	0.500	pass	
Diazinon	< LOQ	0.20	0.100	pass		Dichlorvos	< LOQ	1.0	0.500	pass	
Dimethoate	< LOQ	0.20	0.100	pass		Ethoprophos	< LOQ	0.20	0.100	pass	
Etofenprox	< LOQ	0.40	0.200	pass		Etoxazole	< LOQ	0.20	0.100	pass	
Fenoxycarb	< LOQ	0.20	0.100	pass		Fenpyroximate	< LOQ	0.40	0.200	pass	
Fipronil	< LOQ	0.40	0.200	pass		Fonicamid	< LOQ	1.0	0.400	pass	
Fludioxonil	< LOQ	0.40	0.200	pass		Hexythiazox	< LOQ	1.0	0.400	pass	
Imazalil	< LOQ	0.20	0.100	pass		Imidacloprid	< LOQ	0.40	0.200	pass	
Kresoxim-methyl	< LOQ	0.40	0.200	pass		Malathion	< LOQ	0.20	0.100	pass	
Metalaxyl	< LOQ	0.20	0.100	pass		Methiocarb	< LOQ	0.20	0.100	pass	
Methomyl	< LOQ	0.40	0.200	pass		MGK-264	< LOQ	0.20	0.100	pass	
Myclobutanil	< LOQ	0.20	0.100	pass		Naled	< LOQ	0.50	0.250	pass	
Oxamyl	< LOQ	1.0	0.500	pass		Paclotrazole	< LOQ	0.40	0.200	pass	
Parathion-Methyl	< LOQ	0.20	0.200	pass		Permethrin	< LOQ	0.20	0.100	pass	
Phosmet	< LOQ	0.20	0.100	pass		Piperonyl butoxide	< LOQ	2.0	1.00	pass	
Prallethrin	< LOQ	0.20	0.200	pass		Propiconazole	< LOQ	0.40	0.200	pass	
Propoxur	< LOQ	0.20	0.100	pass		Pyrethrin I (total)	< LOQ	1.0	0.500	pass	
Pyridaben	< LOQ	0.20	0.100	pass		Spinosad	< LOQ	0.20	0.100	pass	
Spiromesifen	< LOQ	0.20	0.100	pass		Spirotetramat	< LOQ	0.20	0.100	pass	
Spiroxamine	< LOQ	0.40	0.200	pass		Tebuconazole	< LOQ	0.40	0.200	pass	
Thiacloprid	< LOQ	0.20	0.100	pass		Thiamethoxam	< LOQ	0.20	0.100	pass	
Trifloxystrobin	< LOQ	0.20	0.100	pass							



Terpenes				Method J AOAC 2015 V98-6	Units %	Batch 2203907	Analyze 05/05/22 09:03 PM		
Analyte	Result	LOQ	% of Total	Notes	Analyte	Result	LOQ	% of Total	Notes
farnesene [†]	0.0820	0.018	27.1523%		β-Caryophyllene [†]	0.0741	0.018	24.5364%	
α-Bisabolol [†]	0.0387	0.018	12.8146%		Humulene [†]	0.0342	0.018	11.3245%	
(-)-caryophyllene oxide [†]	0.0285	0.018	9.4371%		β-Myrcene [†]	0.0247	0.018	8.1788%	
(-)-Guaiol [†]	0.0193	0.018	6.3907%		Linalool [†]	< LOQ	0.018	0.00%	
α-Terpinene [†]	< LOQ	0.018	0.00%		(R)-(+)-Limonene [†]	< LOQ	0.018	0.00%	
p-Cymene [†]	< LOQ	0.018	0.00%		Geraniol [†]	< LOQ	0.018	0.00%	
Terpinolene [†]	< LOQ	0.018	0.00%		Eucalyptol [†]	< LOQ	0.018	0.00%	
Sabinene [†]	< LOQ	0.018	0.00%		nerol [†]	< LOQ	0.018	0.00%	
(+)-Cedrol [†]	< LOQ	0.018	0.00%		Geranyl acetate [†]	< LOQ	0.018	0.00%	
(-)-α-Terpineol [†]	< LOQ	0.018	0.00%		(±)-trans-Nerolidol [†]	< LOQ	0.018	0.00%	
valencene [†]	< LOQ	0.018	0.00%		(-)-β-Pinene [†]	< LOQ	0.018	0.00%	
(+)-fenchol [†]	< LOQ	0.018	0.00%		Sabinene hydrate [†]	< LOQ	0.018	0.00%	
(+)-Pulegone [†]	< LOQ	0.018	0.00%		(±)-fenchone [†]	< LOQ	0.018	0.00%	
(±)-Camphor [†]	< LOQ	0.018	0.00%		(+)-Borneol [†]	< LOQ	0.018	0.00%	
α-pinene [†]	< LOQ	0.018	0.00%		Menthol [†]	< LOQ	0.018	0.00%	
(-)-Isopulegol [†]	< LOQ	0.018	0.00%		(±)-cis-Nerolidol [†]	< LOQ	0.018	0.00%	
α-cedrene [†]	< LOQ	0.018	0.00%		α-phellandrene [†]	< LOQ	0.018	0.00%	
Camphene [†]	< LOQ	0.018	0.00%		cis-β-Ocimene [†]	< LOQ	0.006	0.00%	
d-3-Carene [†]	< LOQ	0.018	0.00%		γ-Terpinene [†]	< LOQ	0.018	0.00%	
Isoborneol [†]	< LOQ	0.018	0.00%		trans-β-Ocimene [†]	< LOQ	0.012	0.00%	
Total Terpenes	0.302								



Metals									
Analyte	Result	Limits	Units	LOQ	Batch	Analyze	Method	Status	Notes
Arsenic	< LOQ	0.200	mg/kg	0.0937	2203916	05/05/22	AOAC 2013.06 (mod.)	pass	X
Cadmium	< LOQ	0.200	mg/kg	0.0937	2203916	05/05/22	AOAC 2013.06 (mod.)	pass	X
Lead	< LOQ	0.500	mg/kg	0.0937	2203916	05/05/22	AOAC 2013.06 (mod.)	pass	X
Mercury	< LOQ	0.100	mg/kg	0.0468	2203916	05/05/22	AOAC 2013.06 (mod.)	pass	X



12423 NE Whitaker Way
Portland, OR 97230
503-254-1794



Report Number: 22-005135/D004.R000
Report Date: 05/12/2022
ORELAP#: OR100028
Purchase Order:
Received: 05/04/22 15:52

These test results are representative of the individual sample selected and submitted by the client.

Abbreviations

Limits: Action Levels per OAR-333-007-0400, OAR-333-007-0210, OAR-333-007-0220, CCR title 16-division 42. BCC-section 5723

Limit(s) of Quantitation (LOQ): The minimum levels, concentrations, or quantities of a target variable (e.g., target analyte) that can be reported with a specified degree of confidence.

† = Analyte not NELAP accredited.

Units of Measure

cfu/g = Colony forming units per gram

g = g

µg/g = Microgram per gram

mg/kg = Milligram per kilogram = parts per million (ppm)

mg/1g = Milligram per 1g

% = Percentage of sample

% wt = µg/g divided by 10,000

Glossary of Qualifiers

I: Insufficient sample received to meet method requirements.

X: Not ORELAP accredited.

Approved Signatory

Derrick Tanner
General Manager



12423 NE Whitaker Way
Portland, OR 97230
503-254-1794



Report Number: 22-005135/D004.R000
Report Date: 05/12/2022
ORELAP#: OR100028
Purchase Order:
Received: 05/04/22 15:52

12423 NE Whitaker Way Portland OR 97230 p.503-254-1794

Cannabis Chain of Custody Record



ORELAP ID: OR100028

Field ID		Date/Time Collected	Pesticides - OR 59 compounds	Pesticide Multi-Residue - 379 compounds	Potency	Residual Solvents	Water Activity	Moisture	Terpenes	Micro: Yeast and Mold	Micro: E. Coli and Total Coliform	Heavy Metals	Mycotoxins	Other	Matrix	Weight	Serving size for edibles	Comments/Metric ID
[Redacted]					X										Liquid TN	mg/g	LaZ. Nat.	
Form-ED03(A) - TN.D.CP6.CP0.F50		5/4 3p				X												Discard
Form-ED03(A) - TN.D.CP6.CP0.F50		5/4 3p	X			X			X	X	X	X						Discard
[Redacted]																		

Collected By:	Relinquished By:	Date:	Time:	Received by:	Signature:	Lab Use Only:
<input type="checkbox"/> Standard (5 day) <input type="checkbox"/> Rush (3-4 day) (1.5x Standard) <input checked="" type="checkbox"/> Priority Rush (2 day) (2x Standard) Potency 1st	[Redacted]			[Redacted]	[Redacted]	Client Alias: Order Number: Proper Container <input checked="" type="checkbox"/> Sample Condition <input checked="" type="checkbox"/> Temperature: 24.4 Shipped Via: Courier Evidence of cooling: <input type="checkbox"/> Yes <input checked="" type="checkbox"/> No

SUBMISSION OF SAMPLES WITH TESTING REQUIREMENTS TO PIXIS WILL BE UNDERSTOOD TO BE AN AGREEMENT FOR SERVICES IN ACCORDANCE WITH THE CONDITIONS LISTED ON THE BACK OF THIS FORM

Revision: 1.02 Control#: CF023
Effective 01/31/2019 Revised 01/31/2019

www.pixislabs.com

Page 1 of 2



12423 NE Whitaker Way
 Portland, OR 97230
 503-254-1794



Report Number: 22-005135/D004.R000
Report Date: 05/12/2022
ORELAP#: OR100028
Purchase Order:
Received: 05/04/22 15:52

Revision 1 Documen D 7148
 Legacy D Workshee Valida ed 04/20/2021

Laboratory Quality Control Results

JAOAC2015 V98-6 Batch ID 2203887

Analyte	Result	Spike	Units	% Rec	Limits	Evaluation	Notes
CBDVA	0.0	0.033	%	100.0000	80.0 - 120	Acceptable	
CBDV	0.0361	0.033	%	108	80.0 - 120	Acceptable	
CBE	0.0319	0.033	%	95.7	80.0 - 120	Acceptable	
CBDA	0.0336	0.033	%	101	90.0 - 110	Acceptable	
CBGA	0.0309	0.033	%	92.6	80.0 - 120	Acceptable	
CBG	0.0330	0.033	%	98.9	80.0 - 120	Acceptable	
CBD	0.0347	0.033	%	104	90.0 - 110	Acceptable	
THCV	0.0318	0.033	%	95.5	80.0 - 120	Acceptable	
d8THCV	0.0334	0.033	%	100	80.0 - 120	Acceptable	
THCVA	0.0305	0.033	%	91.4	80.0 - 120	Acceptable	
CBN	0.0345	0.033	%	104	90.0 - 110	Acceptable	
exo-THC	0.0322	0.033	%	96.5	80.0 - 120	Acceptable	
d9THC	0.0349	0.033	%	105	90.0 - 110	Acceptable	
d8THC	0.0323	0.033	%	96.9	90.0 - 110	Acceptable	
CBL	0.0302	0.033	%	90.5	80.0 - 120	Acceptable	
CBC	0.0330	0.033	%	98.9	80.0 - 120	Acceptable	
THCA	0.0325	0.033	%	97.5	90.0 - 110	Acceptable	
CBCA	0.0324	0.033	%	97.3	80.0 - 120	Acceptable	
CBLA	0.0330	0.033	%	98.9	80.0 - 120	Acceptable	
CBT	0.0334	0.033	%	100	80.0 - 120	Acceptable	

Method Blank

Analyte	Result	LOQ	Units	Limits	Evaluation	Notes
CBDVA	< LOQ	0.003	%	< 0.003	Acceptable	
CBDV	< LOQ	0.003	%	< 0.003	Acceptable	
CBE	< LOQ	0.003	%	< 0.003	Acceptable	
CBDA	< LOQ	0.003	%	< 0.003	Acceptable	
CBGA	< LOQ	0.003	%	< 0.003	Acceptable	
CBG	< LOQ	0.003	%	< 0.003	Acceptable	
CBD	< LOQ	0.003	%	< 0.003	Acceptable	
THCV	< LOQ	0.003	%	< 0.003	Acceptable	
d8THCV	< LOQ	0.003	%	< 0.003	Acceptable	
THCVA	< LOQ	0.003	%	< 0.003	Acceptable	
CBN	< LOQ	0.003	%	< 0.003	Acceptable	
exo-THC	< LOQ	0.003	%	< 0.003	Acceptable	
d9THC	< LOQ	0.003	%	< 0.003	Acceptable	
d8THC	< LOQ	0.003	%	< 0.003	Acceptable	
CBL	< LOQ	0.003	%	< 0.003	Acceptable	
CBC	< LOQ	0.003	%	< 0.003	Acceptable	
THCA	< LOQ	0.003	%	< 0.003	Acceptable	
CBCA	< LOQ	0.003	%	< 0.003	Acceptable	
CBLA	< LOQ	0.003	%	< 0.003	Acceptable	
CBT	< LOQ	0.003	%	< 0.003	Acceptable	

Abbreviations

ND - None Detected at or above MRL
 RPD - Relative Percent Difference
 LOQ - Limit of Quantitation

Units of Measure:

% - Percent



12423 NE Whitaker Way
Portland, OR 97230
503-254-1794



Report Number: 22-005135/D004.R000
Report Date: 05/12/2022
ORELAP#: OR100028
Purchase Order:
Received: 05/04/22 15:52

Revision 1 Document D 7148
Legacy D Worksheet Validated 04/20/2021

Laboratory Quality Control Results

JAOAC2015 V98-6		Batch ID 2203887						
Sample Duplicate		Sample D 22-005126-0001						
Analyte	Result	Org. Result	LOQ	Units	RPD	Limits	Evaluation	Notes
CBDVA	< LOQ	< LOQ	0.003	%	NA	< 20	Acceptable	
CBDV	0.0104	0.0103	0.003	%	1.05	< 20	Acceptable	
CBE	< LOQ	< LOQ	0.003	%	NA	< 20	Acceptable	
CBDA	0.00495	0.00460	0.003	%	7.43	< 20	Acceptable	
CBGA	< LOQ	< LOQ	0.003	%	NA	< 20	Acceptable	
CBG	0.0174	0.0170	0.003	%	2.31	< 20	Acceptable	
CBD	1.83	1.79	0.003	%	2.01	< 20	Acceptable	
THCV	< LOQ	< LOQ	0.003	%	NA	< 20	Acceptable	
d8THCV	< LOQ	< LOQ	0.003	%	NA	< 20	Acceptable	
THCVA	< LOQ	< LOQ	0.003	%	NA	< 20	Acceptable	
CBN	0.0112	0.0110	0.003	%	1.42	< 20	Acceptable	
exo-THC	< LOQ	< LOQ	0.003	%	NA	< 20	Acceptable	
d9THC	0.0515	0.0512	0.003	%	0.694	< 20	Acceptable	
d8THC	< LOQ	< LOQ	0.003	%	NA	< 20	Acceptable	
CBL	< LOQ	< LOQ	0.003	%	NA	< 20	Acceptable	
CBC	0.0493	0.0492	0.003	%	0.323	< 20	Acceptable	
THCA	< LOQ	< LOQ	0.003	%	NA	< 20	Acceptable	
CBCA	< LOQ	< LOQ	0.003	%	NA	< 20	Acceptable	
CBLA	< LOQ	< LOQ	0.003	%	NA	< 20	Acceptable	
CBT	0.00868	0.00931	0.003	%	7.03	< 20	Acceptable	

Abbreviations

ND - None Detected at or above MRL
RPD - Relative Percent Difference
LOQ - Limit of Quantitation

Units of Measure:

% - Percent



12423 NE Whitaker Way
 Portland, OR 97230
 503-254-1794



Report Number: 22-005135/D004.R000
Report Date: 05/12/2022
ORELAP#: OR100028
Purchase Order:
Received: 05/04/22 15:52

Revision 1 Document D 7086
 Legacy D CFL-E57Worksheet Validated 11/04/2020

Terpenes Quality Control Results

Method Reference EPA 5035				Batch ID 2203907					
Method Blank				Laboratory Control Sample					
Analyte	Result	LOQ	Notes	Result	LCS	Units	LCS % Rec	Limits	Notes
a-pinene	< OQ	< 200		588	500	µg/g	118%	70 - 30	
Camphene	< OQ	< 200		453	500	µg/g	91%	70 - 30	
Sabinene	< OQ	< 200		598	500	µg/g	120%	70 - 30	
b-Pinene	< OQ	< 200		588	500	µg/g	118%	70 - 30	
b-Myrcene	< OQ	< 200		43	500	µg/g	86%	70 - 30	
a-phellandrene	< OQ	< 200		4 5	500	µg/g	83%	70 - 30	
d-3-Carene	< OQ	< 200		434	500	µg/g	87%	70 - 30	
a-Terpinene	< OQ	< 200		602	500	µg/g	120%	70 - 30	
p-Cymene	< OQ	< 200		469	500	µg/g	94%	70 - 30	
D-imonene	< OQ	< 200		590	500	µg/g	118%	70 - 30	
α-caryophyllol	< OQ	< 200		428	500	µg/g	86%	70 - 30	
b-cis-Ocimene	< OQ	< 67		52	67	µg/g	91%	70 - 30	
b-trans-Ocimene	< OQ	< 33		298	333	µg/g	89%	70 - 30	
γ-Terpinene	< OQ	< 200		587	500	µg/g	117%	70 - 30	
Sabinene hydrate	< OQ	< 200		602	500	µg/g	120%	70 - 30	
Terpinolene	< OQ	< 200		580	500	µg/g	116%	70 - 30	
D-enchone	< OQ	< 200		537	500	µg/g	107%	70 - 30	
linalool	< OQ	< 200		444	500	µg/g	89%	70 - 30	
α-enchol	< OQ	< 200		6 9	500	µg/g	124%	70 - 30	
Camphor	< OQ	< 200		440	500	µg/g	88%	70 - 30	
sopulego	< OQ	< 200		437	500	µg/g	87%	70 - 30	
soborneol	< OQ	< 200		4 6	500	µg/g	83%	70 - 30	
Borneol	< OQ	< 200		624	500	µg/g	125%	70 - 30	
D-Menthol	< OQ	< 200		420	500	µg/g	84%	70 - 30	
Terpineol	< OQ	< 200		6 6	500	µg/g	123%	70 - 30	
Nerol	< OQ	< 200		425	500	µg/g	85%	70 - 30	
Pulegone	< OQ	< 200		570	500	µg/g	114%	70 - 30	
Geraniol	< OQ	< 200		639	500	µg/g	128%	70 - 30	
Geranyl Acetate	< OQ	< 200		428	500	µg/g	86%	70 - 30	
α-Cedrene	< OQ	< 200		6 3	500	µg/g	123%	70 - 30	
b-Caryophyllene	< OQ	< 200		4 4	500	µg/g	83%	70 - 30	
α-Humulene	< OQ	< 200		6 9	500	µg/g	124%	70 - 30	
Valenene	< OQ	< 200		42	500	µg/g	84%	70 - 30	
cis-Nerolidol	< OQ	< 200		439	500	µg/g	88%	70 - 30	
α-arnesene	< OQ	< 200		456	500	µg/g	91%	70 - 30	
trans-Nerolidol	< OQ	< 200		62	500	µg/g	124%	70 - 30	
Caryophyllene Oxide	< OQ	< 200		423	500	µg/g	85%	70 - 30	
Guaiol	< OQ	< 200		639	500	µg/g	128%	70 - 30	
Cedrol	< OQ	< 200		4 9	500	µg/g	84%	70 - 30	
α-Bisabolol	< OQ	< 200		435	500	µg/g	87%	70 - 30	

Definitions

LOQ	Limit of Quantitation
LCS	Laboratory Control Sample
% REC	Percent Recovery



12423 NE Whitaker Way
 Portland, OR 97230
 503-254-1794



Report Number: 22-005135/D004.R000
Report Date: 05/12/2022
ORELAP#: OR100028
Purchase Order:
Received: 05/04/22 15:52

Revision 1 Document D 7086
 Legacy D CFL-E57Worksheet Validated 11/04/2020

Terpenes Quality Control Results

Method Reference EPA 5035		Batch ID 2203907					
Sample/Sample Duplicate		Sample ID 22-004868-0001					
Analyte	Result	Org. Result	LOQ	Units	% RPD	LIMIT	Notes
a-pinene	< OQ	< OQ	96	µg/g	0%	< 20	
Camphene	< OQ	< OQ	96	µg/g	0%	< 20	
Sabinene	< OQ	< OQ	96	µg/g	0%	< 20	
b-Pinene	< OQ	< OQ	96	µg/g	0%	< 20	
b-Myrcene	< OQ	< OQ	96	µg/g	0%	< 20	
a-phellandrene	< OQ	< OQ	96	µg/g	0%	< 20	
d-3-Carene	< OQ	< OQ	96	µg/g	0%	< 20	
a-Terpinene	< OQ	< OQ	96	µg/g	0%	< 20	
p-Cymene	< OQ	< OQ	96	µg/g	0%	< 20	
D-imonene	< OQ	< OQ	96	µg/g	0%	< 20	
α-caryophyllol	< OQ	< OQ	96	µg/g	0%	< 20	
b-cis-Ocimene	< OQ	< OQ	65.2	µg/g	0%	< 20	
b-trans-Ocimene	< OQ	< OQ	30	µg/g	0%	< 20	
g-Terpinene	< OQ	< OQ	96	µg/g	0%	< 20	
Sabinene hydrate	< OQ	< OQ	96	µg/g	0%	< 20	
Terpinolene	< OQ	< OQ	96	µg/g	0%	< 20	
D-enchone	< OQ	< OQ	96	µg/g	0%	< 20	
α-inalool	< OQ	< OQ	96	µg/g	0%	< 20	
α-enchol	< OQ	< OQ	96	µg/g	0%	< 20	
Camphor	< OQ	< OQ	96	µg/g	0%	< 20	
α-sopulego	< OQ	< OQ	96	µg/g	0%	< 20	
α-soborneol	< OQ	< OQ	96	µg/g	0%	< 20	
Borneol	< OQ	< OQ	96	µg/g	0%	< 20	
D-Menthol	< OQ	< OQ	96	µg/g	0%	< 20	
Terpineol	< OQ	< OQ	96	µg/g	0%	< 20	
Nerol	< OQ	< OQ	96	µg/g	0%	< 20	
Pulegone	< OQ	< OQ	96	µg/g	0%	< 20	
Geraniol	< OQ	< OQ	96	µg/g	0%	< 20	
Geranyl acetate	< OQ	< OQ	96	µg/g	0%	< 20	
α-Cedrene	< OQ	< OQ	96	µg/g	0%	< 20	
b-Caryophyllene	< OQ	< OQ	96	µg/g	0%	< 20	
α-Humulene	< OQ	< OQ	96	µg/g	0%	< 20	
Valenene	< OQ	< OQ	96	µg/g	0%	< 20	
cis-Nerolidol	< OQ	< OQ	96	µg/g	0%	< 20	
α-arnesene	< OQ	< OQ	96	µg/g	0%	< 20	
trans-Nerolidol	< OQ	< OQ	96	µg/g	0%	< 20	
Caryophyllene Oxide	< OQ	< OQ	96	µg/g	0%	< 20	
Guaiol	< OQ	< OQ	96	µg/g	0%	< 20	
Cedrol	< OQ	< OQ	96	µg/g	0%	< 20	
α-Bisabolol	< OQ	< OQ	96	µg/g	0%	< 20	

Definitions

RPD Relative Percent Difference



12423 NE Whitaker Way
 Portland, OR 97230
 503-254-1794

Report Number: 22-005135/D004.R000
 Report Date: 05/12/2022
 ORELAP#: OR100028
 Purchase Order:
 Received: 05/04/22 15:52



Revision Document D
 Legacy D Effective

Laboratory Quality Control Results

Residual Solvents				Batch ID: 2204069					
Method Blank				Laboratory Control Sample					
Analyte	Result	LOQ	Notes	Result	Spike	Units	% Rec	Limits	Notes
Propane	ND	< 200		599	572	µg/g	104.7	60	120
Isobutane	ND	< 200		762	731	µg/g	104.2	60	120
Butane	ND	< 200		750	731	µg/g	102.6	60	120
2,2 Dimethylpropane	ND	< 200		1020	936	µg/g	109.0	60	120
Methanol	ND	< 200		1430	1620	µg/g	88.3	60	120
Ethylene Oxide	ND	< 30		66.2	56.2	µg/g	117.8	60	120
2 Methylbutane	ND	< 200		1500	1620	µg/g	92.6	60	120
Pentane	ND	< 200		1470	1610	µg/g	91.3	60	120
Ethanol	ND	< 200		1520	1630	µg/g	93.3	70	130
Ethyl Ether	ND	< 200		1510	1620	µg/g	93.2	60	120
2,2 Dimethylbutane	ND	< 30		165	174	µg/g	94.8	60	120
Acetone	ND	< 200		1530	1650	µg/g	92.7	60	120
2 Propanol	ND	< 200		1460	1610	µg/g	90.7	60	120
Ethyl Formate	ND	< 500		1430	1600	µg/g	89.4	70	130
Acetonitrile	ND	< 100		444	498	µg/g	89.2	60	120
Methyl Acetate	ND	< 500		1480	1610	µg/g	91.9	70	130
2,3 Dimethylbutane	ND	< 30		165	176	µg/g	93.8	60	120
Dichloromethane	ND	< 60		492	510	µg/g	96.5	60	120
2 Methylpentane	ND	< 30		163	176	µg/g	92.6	60	120
M BE	ND	< 500		1510	1600	µg/g	94.4	70	130
3 Methylpentane	ND	< 30		160	175	µg/g	91.4	60	120
Hexane	ND	< 30		162	177	µg/g	91.5	60	120
1 Propanol	ND	< 500		1410	1610	µg/g	87.6	70	130
Methylethylketone	ND	< 500		1500	1600	µg/g	93.8	70	130
Ethyl acetate	ND	< 200		1500	1630	µg/g	92.0	60	120
2 Butanol	ND	< 200		1510	1620	µg/g	93.2	60	120
tetrahydrofuran	ND	< 100		462	500	µg/g	92.4	60	120
Cyclohexane	ND	< 200		1530	1620	µg/g	94.4	60	120
2 methyl 1 propanol	ND	< 500		1360	1620	µg/g	84.0	70	130
Benzene	ND	< 1		4.78	5.32	µg/g	89.8	60	120
Isopropyl Acetate	ND	< 200		1480	1620	µg/g	91.4	60	120
Heptane	ND	< 200		1440	1770	µg/g	81.4	60	120
1 Butanol	ND	< 500		1240	1600	µg/g	77.5	70	130
Propyl Acetate	ND	< 500		1510	1600	µg/g	94.4	70	130
1,4 Dioxane	ND	< 100		474	504	µg/g	94.0	60	120
2 Ethoxyethanol	ND	< 30		168	181	µg/g	92.8	60	120
Methylisobutylketone	ND	< 500		1400	1610	µg/g	87.0	70	130
3 Methyl 1 butanol	ND	< 500		1300	1610	µg/g	80.7	70	130
Ethylene Glycol	ND	< 200		350	494	µg/g	70.9	60	120
oluene	ND	< 100		464	491	µg/g	94.5	60	120
Isobutyl Acetate	ND	< 500		1570	1600	µg/g	98.1	70	130
1 Pentanol	ND	< 500		1350	1610	µg/g	83.9	70	130
Butyl Acetate	ND	< 500		1370	1610	µg/g	85.1	70	130
Ethylbenzene	ND	< 200		940	973	µg/g	96.6	60	120
m,p Xylene	ND	< 200		969	996	µg/g	97.3	60	120
o Xylene	ND	< 200		967	973	µg/g	99.4	60	120
Cumene	ND	< 30		172	170	µg/g	101.2	60	120
Anisole	ND	< 500		1290	1610	µg/g	80.1	70	130
DMSO	ND	< 500		1430	1630	µg/g	87.7	70	130
1,2 dimethoxyethane	ND	< 50		156	164	µg/g	95.1	70	130
riethylamine	ND	< 500		1490	1600	µg/g	93.1	70	130
N,N dimethylformamide	ND	< 150		433	497	µg/g	87.1	70	130
N,N dimethylacetamide	ND	< 150		421	498	µg/g	84.5	70	130
Pyridine	ND	< 50		182	180	µg/g	101.1	70	130
1,2 Dichloroethane	ND	< 1		1.15	1	µg/g	115.0	70	130
Chloroform	ND	< 1		1.12	1	µg/g	112.0	70	130
richloroethylene	ND	< 1		1.15	1	µg/g	115.0	70	130



12423 NE Whitaker Way
Portland, OR 97230
503-254-1794



Report Number: 22-005135/D004.R000
Report Date: 05/12/2022
ORELAP#: OR100028
Purchase Order:
Received: 05/04/22 15:52

Revision Document D
Legacy D Effective

QC - Sample Duplicate		Sample ID: 22-004788-0001						
Analyte	Result	Org. Result	LOQ	Units	RPD	Limits	Accept/Fail	Notes
Propane	ND	ND	200	µg/g	0.0	< 20	Acceptable	
Isobutane	ND	ND	200	µg/g	0.0	< 20	Acceptable	
Butane	ND	ND	200	µg/g	0.0	< 20	Acceptable	
2,2 Dimethylpropane	ND	ND	200	µg/g	0.0	< 20	Acceptable	
Methanol	ND	ND	200	µg/g	0.0	< 20	Acceptable	
Ethylene Oxide	ND	ND	30	µg/g	0.0	< 20	Acceptable	
2 Methylbutane	ND	ND	200	µg/g	0.0	< 20	Acceptable	
Pentane	ND	ND	200	µg/g	0.0	< 20	Acceptable	
Ethanol	ND	ND	200	µg/g	0.0	< 20	Acceptable	
Ethyl Ether	ND	ND	200	µg/g	0.0	< 20	Acceptable	
2,2 Dimethylbutane	ND	ND	30	µg/g	0.0	< 20	Acceptable	
Acetone	ND	ND	200	µg/g	0.0	< 20	Acceptable	
2 Propanol	ND	ND	200	µg/g	0.0	< 20	Acceptable	
Ethyl Formate	ND	ND	500	µg/g	0.0	< 20	Acceptable	
Acetonitrile	ND	ND	100	µg/g	0.0	< 20	Acceptable	
Methyl Acetate	ND	ND	500	µg/g	0.0	< 20	Acceptable	
2,3 Dimethylbutane	ND	ND	30	µg/g	0.0	< 20	Acceptable	
Dichloromethane	ND	ND	60	µg/g	0.0	< 20	Acceptable	
2 Methylpentane	ND	ND	30	µg/g	0.0	< 20	Acceptable	
M BE	ND	ND	500	µg/g	0.0	< 20	Acceptable	
3 Methylpentane	ND	ND	30	µg/g	0.0	< 20	Acceptable	
Hexane	ND	ND	30	µg/g	0.0	< 20	Acceptable	
1 Propanol	ND	ND	500	µg/g	0.0	< 20	Acceptable	
Methyl ethyl ketone	ND	ND	500	µg/g	0.0	< 20	Acceptable	
Ethyl acetate	ND	ND	200	µg/g	0.0	< 20	Acceptable	
2 Butanol	ND	ND	200	µg/g	0.0	< 20	Acceptable	
tetrahydrofuran	ND	ND	100	µg/g	0.0	< 20	Acceptable	
Cyclohexane	ND	ND	200	µg/g	0.0	< 20	Acceptable	
2 methyl 1 propanol	ND	ND	500	µg/g	0.0	< 20	Acceptable	
Benzene	ND	ND	1	µg/g	0.0	< 20	Acceptable	
Isopropyl Acetate	ND	ND	200	µg/g	0.0	< 20	Acceptable	
Heptane	ND	ND	200	µg/g	0.0	< 20	Acceptable	
1 Butanol	ND	ND	500	µg/g	0.0	< 20	Acceptable	
Propyl Acetate	ND	ND	500	µg/g	0.0	< 20	Acceptable	
1,4 Dioxane	ND	ND	100	µg/g	0.0	< 20	Acceptable	
2 Ethoxyethanol	ND	ND	30	µg/g	0.0	< 20	Acceptable	
Methylisobutylketone	ND	ND	500	µg/g	0.0	< 20	Acceptable	
3 Methyl 1 butanol	ND	ND	500	µg/g	0.0	< 20	Acceptable	
Ethylene Glycol	ND	ND	200	µg/g	0.0	< 20	Acceptable	
oluene	ND	ND	100	µg/g	0.0	< 20	Acceptable	
Isobutyl Acetate	ND	ND	500	µg/g	0.0	< 20	Acceptable	
1 Pentanol	ND	ND	500	µg/g	0.0	< 20	Acceptable	
Butyl Acetate	ND	ND	500	µg/g	0.0	< 20	Acceptable	
Ethylbenzene	ND	ND	200	µg/g	0.0	< 20	Acceptable	
m,p Xylene	ND	ND	200	µg/g	0.0	< 20	Acceptable	
o Xylene	ND	ND	200	µg/g	0.0	< 20	Acceptable	
Cumene	ND	ND	30	µg/g	0.0	< 20	Acceptable	
Anisole	ND	ND	500	µg/g	0.0	< 20	Acceptable	
DMSO	ND	ND	500	µg/g	0.0	< 20	Acceptable	
1,2 dimethoxyethane	ND	ND	50	µg/g	0.0	< 20	Acceptable	
triethylamine	ND	ND	500	µg/g	0.0	< 20	Acceptable	
N,N dimethylformamide	ND	ND	150	µg/g	0.0	< 20	Acceptable	
N,N dimethylacetamide	ND	ND	150	µg/g	0.0	< 20	Acceptable	
Pyridine	ND	ND	50	µg/g	0.0	< 20	Acceptable	
1,2 Dichloroethane	ND	ND	1	µg/g	0.0	< 20	Acceptable	
Chloroform	ND	ND	1	µg/g	0.0	< 20	Acceptable	
trichloroethylene	ND	ND	1	µg/g	0.0	< 20	Acceptable	

Abbreviations

ND None Detected at or above MRL
RPD Relative Percent Difference
LOQ Limit of Quantitation

Units of Measure:

µg/g Microgram per gram or ppm



12423 NE Whitaker Way
Portland, OR 97230
503-254-1794



Report Number: 22-005135/D004.R000
Report Date: 05/12/2022
ORELAP#: OR100028
Purchase Order:
Received: 05/04/22 15:52





12423 NE Whitaker Way
 Portland, OR 97230
 503-254-1794



Report Number: 22-005135/D004.R000
Report Date: 05/12/2022
ORELAP#: OR100028
Purchase Order:
Received: 05/04/22 15:52

Explanation of QC Flag Comments:

Code	Explanation
Q	Matrix interferences affecting spike or surrogate recoveries.
Q1	Quality control result biased high. Only non-detect samples reported.
Q2	Quality control outside QC limits. Data considered estimate.
Q3	Sample concentration greater than four times the amount spiked.
Q4	Non-homogenous sample matrix, affecting RPD result and/or % recoveries.
Q5	Spike results above calibration curve.
Q6	Quality control outside QC limits. Data acceptable based on remaining QC.
R	Relative percent difference (RPD) outside control limit.
R1	RPD non-calculable, as sample or duplicate results are less than five times the LOQ.
R2	Sample replicates RPD non-calculable, as only one replicate is within the analytical range.
LOQ1	Quantitation level raised due to low sample volume and/or dilution.
LOQ2	Quantitation level raised due to matrix interference.
B	Analyte detected in method blank, but not in associated samples.
B1	The sample concentration is greater than 5 times the blank concentration.
B2	The sample concentration is less than 5 times the blank concentration.