



## CERTIFICATE OF ANALYSIS

Powered by Confident Cannabis  
1 of 2

HAF.Co

30 Lindbergh Ave.  
Livermore, CA 94551

(510) 514-3520

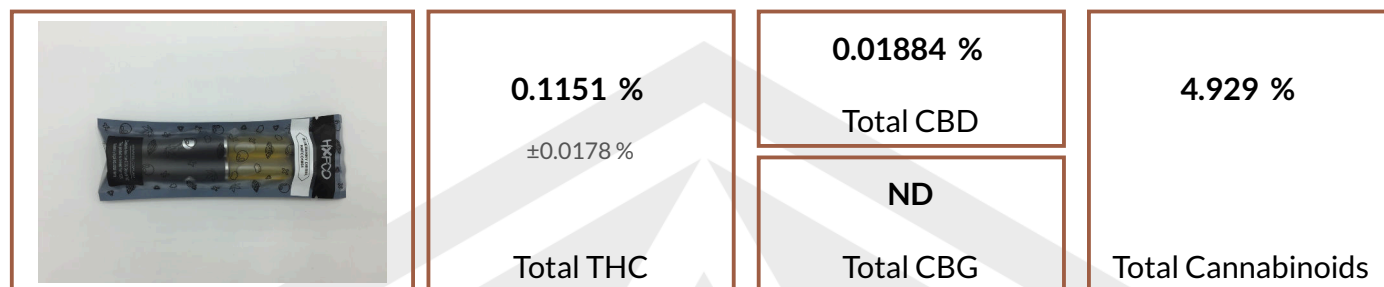
Sample: 230110TRI006.003

Sample Description: 2G Dispo - Blueberry Diesel

Sample Received: 01/10/2023; Report Created: 01/12/2023;  
Sampled By: Client;

HAFCO-1051

Concentrates &amp; Extracts, Vape



## Cannabinoids

Date Analyzed: 01/12/2023

Complete

Analyte	LOD %	LOQ %	Result %	Result mg/g
THCa	0.005211	0.01737	ND	ND
Δ9-THC	0.005211	0.01737	0.1151	1.151
Δ8-THC	0.005211	0.01737	4.299	42.99
THCVa	0.005211	0.01737	ND	ND
THCV	0.005211	0.01737	ND	ND
CBDa	0.005211	0.01737	ND	ND
CBD	0.005211	0.01737	0.01884	0.1884
CBDVa	0.005211	0.01737	ND	ND
CBDV	0.005211	0.01737	0.1728	1.728
CBN	0.005211	0.01737	0.3229	3.229
CBGa	0.005211	0.01737	ND	ND
CBG	0.005211	0.01737	ND	ND
CBCa	0.01012	0.03373	ND	ND
CBC	0.005211	0.01737	ND	ND
CBL	0.005211	0.01737	ND	ND
Total			4.930	49.29

SOP.102, AOAC 2018.11 (Modified); UHPLC-PDA. Total THC = THCa \* 0.877 + Δ9-THC; Total CBD = CBDa \* 0.877 + CBD; Total CBG = CBGa \* 0.878 + CBG. Pass/Fail THC criteria, if listed, is in accordance with 86 FR 5596 issued by the USDA for pre-harvest hemp clearance (total THC - uncertainty ≤ 0.3% THC). Dry weight percent of cannabinoids, if listed, is calculated using the dried weight determined by the moisture content prior to extraction, indicated as follows (SOP.702; Gravimetry).

TRI—  
CHOME  
ANALY—  
TI—CAL6000 Commerce Parkway Suite I  
Mount Laurel, NJ  
(856) 316-0600  
<http://www.trichomeanalytical.com>  
Lic# ISO/IEC 17025:2017 A2LA CERT# 5913.01 // DEA# RT0581098 // NJ HEMP# 34\_00077  
Kristen Goedde  
Lab Manager  
Tom Barkley  
Technical ManagerConfident Cannabis  
All Rights Reserved  
[support@confidentcannabis.com](mailto:support@confidentcannabis.com)  
(866) 506-5866  
[www.confidentcannabis.com](http://www.confidentcannabis.com)

ND=Not Detected, NR=Not Reported, LOD=Limit of Detection, LOQ=Limit of Quantitation. Action levels reported for contaminants are in accordance with 4 CCR § 15714 issued by the California Department of Cannabis Control, and are used as suggested action levels by Trichome Analytical for hemp. Values reported relate only to the product tested and batched under the batch number identified above. Trichome Analytical makes no claims as to the efficacy, safety, or other risks associated with any detected or non-detected level of any compounds reported herein. All analytical work is performed using validated methods and in accordance with state and/or federal guidelines. This certificate may only be reproduced in full.



## CERTIFICATE OF ANALYSIS

Powered by Confident Cannabis  
2 of 2**HAF.Co**30 Lindbergh Ave.  
Livermore, CA 94551

(510) 514-3520

**Sample: 230110TRI006.003**

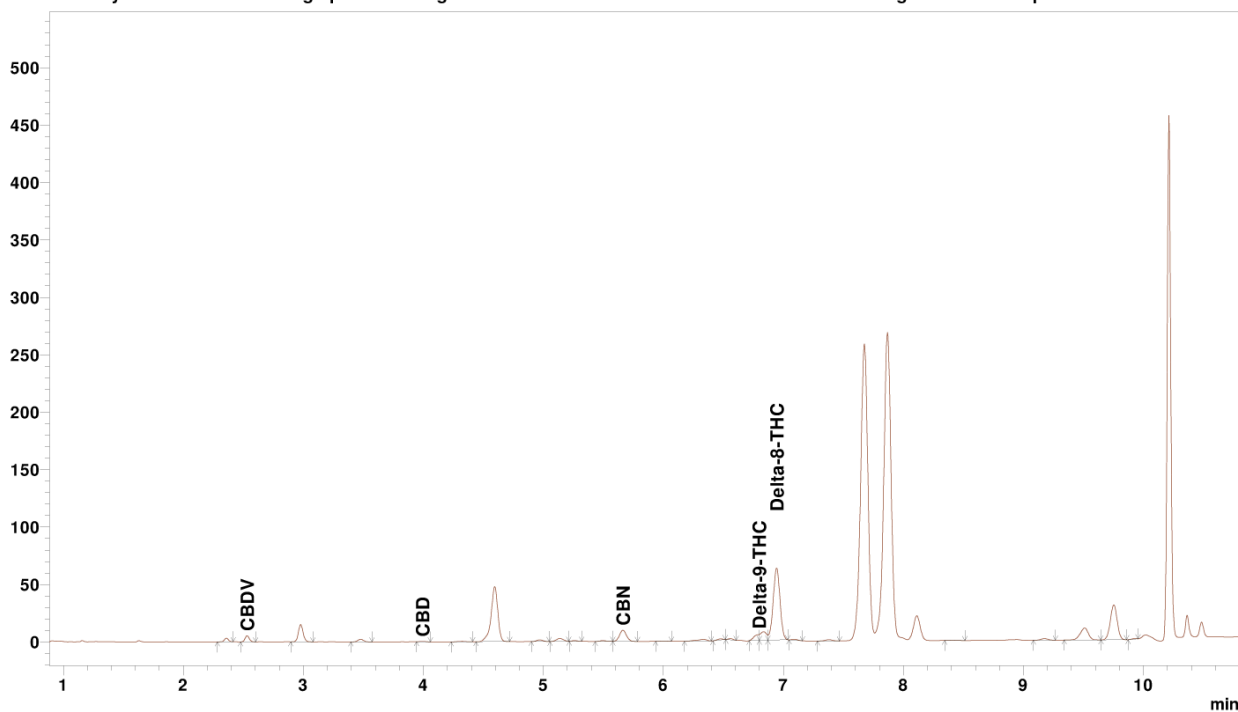
Sample Description: 2G Dispo - Blueberry Diesel

Sample Received: 01/10/2023; Report Created: 01/12/2023;  
Sampled By: Client;**HAFCO-1051**

Concentrates &amp; Extracts, Vape

**Cannabinoids Supporting Information**  
**Full Chromatogram**  
**Method: UHPLC-PDA SOP.102**  
**Sample Filename: 230110TRI006.003\_021.lcd****TRI—**  
**CHOME**  
**ANALY—**  
**TI—CAL**

Analyst Comment: Two large peaks eluting between 7 and 8 minutes consistent with HHC. Large unidentified peaks elutes after 10 min

**TRI—**  
**CHOME**  
**ANALY—**  
**TI—CAL**6000 Commerce Parkway Suite I  
Mount Laurel, NJ  
(856) 316-0600  
<http://www.trichomeanalytical.com>  
Lic# ISO/IEC 17025:2017 A2LA CERT# 5913.01 // DEA# RT0581098 // NJ HEMP# 34\_00077  
Kristen Goedde  
Lab Manager  
Tom Barkley  
Technical ManagerConfident Cannabis  
All Rights Reserved  
[support@confidentcannabis.com](mailto:support@confidentcannabis.com)  
(866) 506-5866  
[www.confidentcannabis.com](http://www.confidentcannabis.com)

ND=Not Detected, NR=Not Reported, LOD=Limit of Detection, LOQ=Limit of Quantitation. Action levels reported for contaminants are in accordance with 4 CCR § 15714 issued by the California Department of Cannabis Control, and are used as suggested action levels by Trichome Analytical for hemp. Values reported relate only to the product tested and batched under the batch number identified above. Trichome Analytical makes no claims as to the efficacy, safety, or other risks associated with any detected or non-detected level of any compounds reported herein. All analytical work is performed using validated methods and in accordance with state and/or federal guidelines. This certificate may only be reproduced in full.