



CERTIFICATE OF ANALYSIS

HAF.Co

30 Lindbergh Ave.
Livermore, CA 94551

(510) 514-3520

Sample: 220415TRI003.001

Sample Description: HHC PINEAPPLE

Sample Received: 04/15/2022; Report Created: 04/19/2022;

HAFCO 1009

Ingestible, Soft Chew



	ND	ND	0.4407 mg/unit
	Total THC	Total CBD	
		ND	Total Cannabinoids
		Total CBG	

Cannabinoids

Date Analyzed: 04/16/2022

Complete

Analyte	LOD mg/unit	LOQ mg/unit	Result mg/unit	Result %
THCa	0.006011	0.02004	ND	ND
Δ9-THC	0.006011	0.02004	ND	ND
Δ8-THC	0.006011	0.02004	0.4081	0.01226
THCVa	0.006011	0.02004	ND	ND
THCV	0.006011	0.02004	ND	ND
CBDa	0.006011	0.02004	ND	ND
CBD	0.006011	0.02004	ND	ND
CBDVa	0.006011	0.02004	ND	ND
CBDV	0.006011	0.02004	ND	ND
CBN	0.006011	0.02004	0.03264	0.0009806
CBGa	0.006011	0.02004	ND	ND
CBG	0.006011	0.02004	ND	ND
CBCa	0.01167	0.03891	ND	ND
CBC	0.006011	0.02004	ND	ND
CBL	0.006011	0.02004	ND	ND
Total			0.4400	0.01324

1 Unit = 1 Gummy, 3.33g

SOP:102, AOAC 2018.11 (Modified); UHPLC-PDA. Total THC = THCa * 0.877 + Δ9-THC; Total CBD = CBDa * 0.877 + CBD; Total CBG = CBGa * 0.878 + CBG. Pass/Fail THC criteria, if listed, is in accordance with 86 FR 5596 issued by the USDA for pre-harvest hemp clearance (total THC - uncertainty ≤ 0.3% THC). Dry weight percent of cannabinoids, if listed, is calculated using the dried weight determined by the moisture content prior to extraction, indicated as follows.

**TRI-
CHOME
ANALY-
TI-CAL**

6000 Commerce Parkway Suite I
Mount Laurel, NJ
(856) 316-0600
<http://www.trichomeanalytical.com>
Lic# ISO/IEC 17025:2017 A2LA CERT# 5913.01 // DEA# RT0581098 // NJ HEMP# 34_00077

Kristen Goedde
Lab Manager

Tom Barkley
Technical Manager

Confident Cannabis
All Rights Reserved
support@confidentcannabis.com
(866) 506-5866
www.confidentcannabis.com



ND=Not Detected, NR=Not Reported, LOD=Limit of Detection, LOQ=Limit of Quantitation. Action levels reported for contaminants are in accordance with N.J.S.A. 24:61-19 (CRC Resolution 2021-9) issued by the New Jersey Cannabis Regulatory Commission. Values reported relate only to the product tested and batched under the batch number identified above. Trichome Analytical makes no claims as to the efficacy, safety, or other risks associated with any detected or non-detected level of any compounds reported herein. All analytical work is performed using validated methods and in accordance with state and/or federal guidelines. This certificate may only be reproduced in full.



CERTIFICATE OF ANALYSIS

HAF.Co

30 Lindbergh Ave.
Livermore, CA 94551

(510) 514-3520

Sample: 220415TRI003.001

Sample Description: HHC PINEAPPLE

Sample Received: 04/15/2022; Report Created: 04/19/2022;

HAFCO 1009

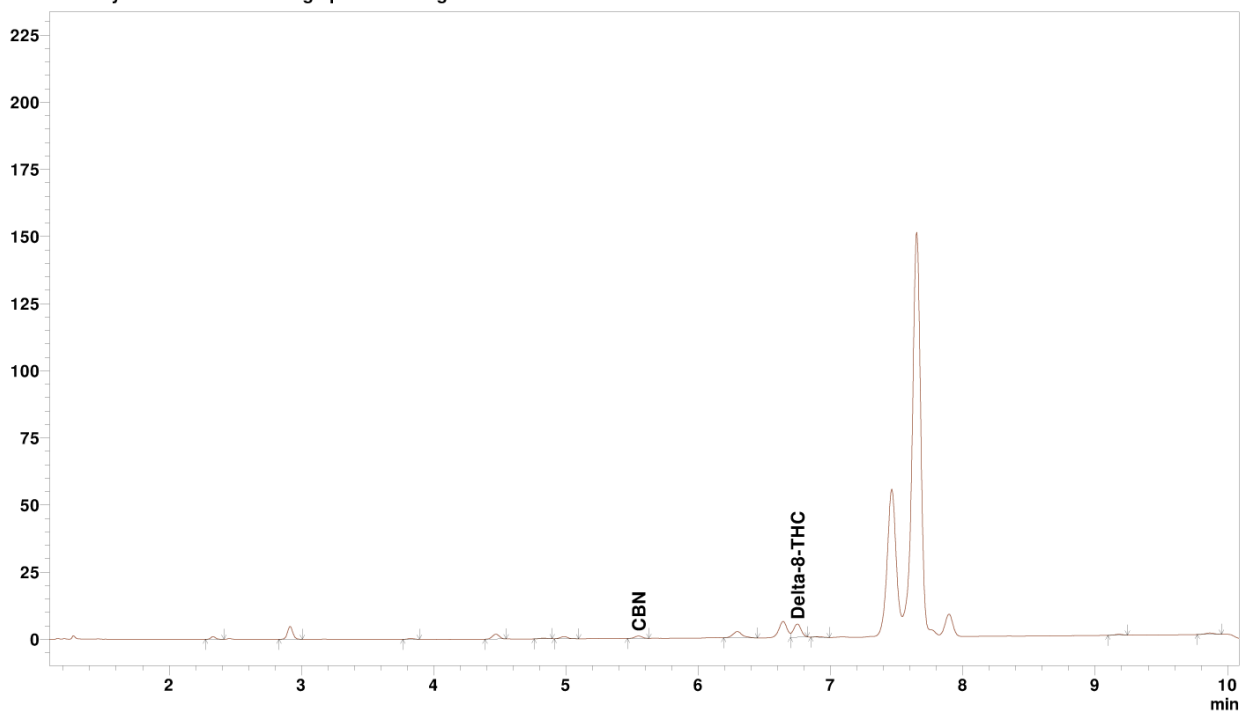
Ingestible, Soft Chew



Cannabinoids Supporting Information
Full Chromatogram
Method: UHPLC-PDA SOP.102
Sample Filename: 220415TRI003.001_002.lcd


TRI—
CHOME
ANALY—
TI—CAL

Analyst Comment: Two large peaks eluting between 7 and 8 minutes consistent with HHC.



TRI—
CHOME
ANALY—
TI—CAL

6000 Commerce Parkway Suite I
Mount Laurel, NJ
(856) 316-0600
<http://www.trichomeanalytical.com>
Lic# ISO/IEC 17025:2017 A2LA CERT# 5913.01 // DEA# RT0581098 // NJ HEMP# 34_00077


Kristen Goedde
Lab Manager


Tom Barkley
Technical Manager

Confident Cannabis
All Rights Reserved
support@confidentcannabis.com
(866) 506-5866
www.confidentcannabis.com

