

# CERTIFICATE OF ANALYSIS



**Order #:** 35057  
**Order Name:** 100 mg CBD Pet Treat  
**Batch#:** 082019  
**Received:** 08/20/2019  
**Completed:** 08/29/2019

**Holy Leaf**  
 3700 Hacienda Blvd  
 Davie Florida, 33314  
 (954) 393-0373  
 info@holyleaf.com



## Sample



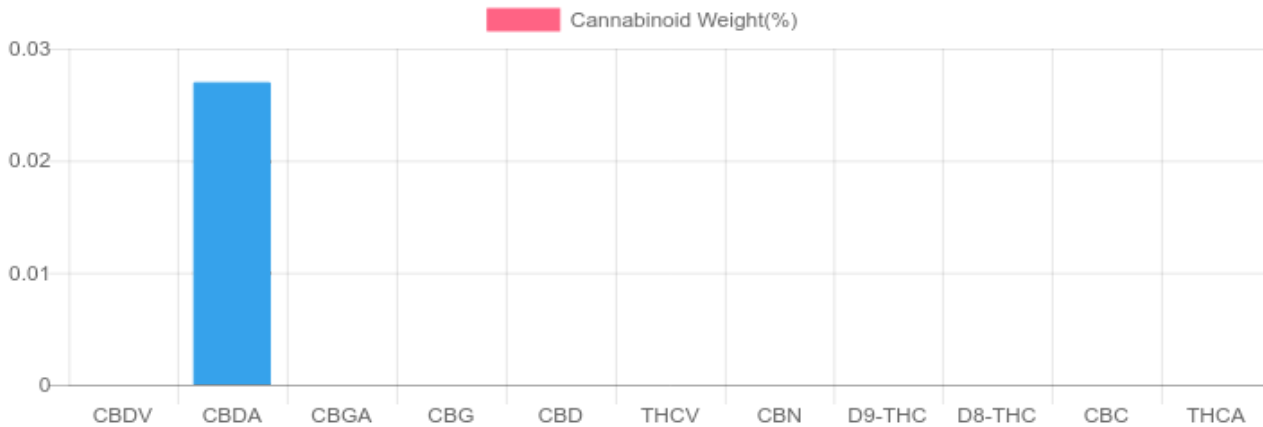
<b>N/D</b> D9-THC	<b>0.024%</b> Total CBD
<b>31.6 mg</b> Cannabinoids per container	<b>27.7 mg</b> CBD per container

## Cannabinoids Test

SHIMADZU INTEGRATED UPLC-PDA  
 GSL SOP 400      **PREPARED:** 08/21/2019 16:28:52      **UPLOADED:** 08/22/2019 17:31:20

Cannabinoids	LOQ	weight(%)	mg/g	mg/container
D9-THC	10 PPM	N/D	N/D	N/D
THCA	10 PPM	N/D	N/D	N/D
CBD	10 PPM	N/D	N/D	N/D
CBDA	20 PPM	<b>0.027%</b>	<b>0.267</b>	<b>31.6</b>
CBDV	20 PPM	N/D	N/D	N/D
CBC	10 PPM	N/D	N/D	N/D
CBN	10 PPM	N/D	N/D	N/D
CBG	10 PPM	N/D	N/D	N/D
CBGA	20 PPM	N/D	N/D	N/D
D8-THC	10 PPM	N/D	N/D	N/D
THCV	10 PPM	N/D	N/D	N/D
TOTAL D9-THC		<b>N/D</b>	<b>N/D</b>	<b>N/D</b>
TOTAL CBD*		<b>0.024%</b>	<b>0.234</b>	<b>27.7</b>
TOTAL CANNABINOIDS		<b>0.027%</b>	<b>0.267</b>	<b>31.6</b>

1 container = 118.5 grams per container x Cannabinoid concentration



Reporting Limit 10 ppm  
 \*Total CBD = CBD + CBDA x 0.877  
 N/D - Not Detected, B/LOQ - Below Limit of Quantification



4001 SW 47th Avenue Suite 207  
 Davie, FL 33314  
 1-833-TEST-CBD  
 info@greenscientificlabs.com



Dr. Andrew Hall, Ph.D., CSO & Lab Director

Green Scientific Labs uses its best efforts to deliver high quality results and to verify that the data contained therein are based on sound scientific judgment and levels listed are guidelines only and all data was reported based on standard laboratory procedures and deviations. However Green Scientific Labs makes no warranties or claims to that effect and further shall not be liable for any damage or misrepresentation that may result from the use or misuse of the data contained herein in any way. Further, Green Scientific Labs makes no claims regarding representations of the analyzed sample to the larger batch from which it was taken. Data and information in this report are intended solely for the individual(s) for whom samples were submitted and as part of our strict confidentiality policy, Green Scientific Labs can only discuss results with the original client of record.

