



## A Gift From Nature Supplies

Orlando, FL 3289  
info@agiffromnaturesupplies.com  
407-704-8519

## Sample 368-012122-147

### AGFN D9 Gummy-Sativa- Strawberry Kush

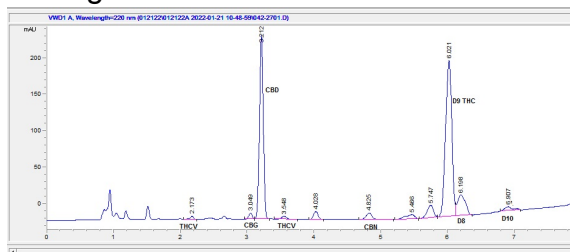
Sample Submitted: 01-21-2022; Report Date: 01-23-2022

Null Sample Unit Size: 5.04 g

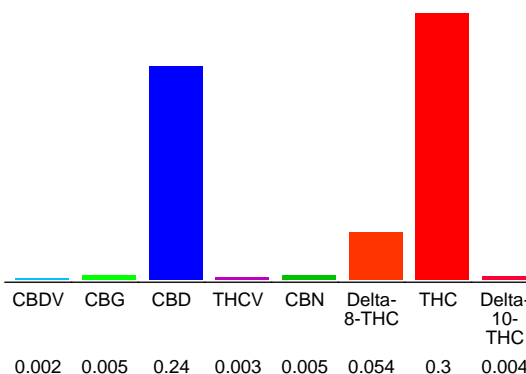
## AGFN D9 Gummy-Sativa- Strawberry Kush

Edible: Candy

### Chromatogram



### Cannabinoid Profile



### Cannabinoid Profile by HPLC

**0.30%**  
Calculated THC Yield

**0.24%**  
Calculated CBD Yield

**0.61%**  
Total Cannabinoids

Cannabinoid	% wt	mg/unit
CBDV	0.002	0.1008
CBG	0.005	0.252
CBD	0.24	12.1
THCV	0.003	0.1512
CBN	0.005	0.252
Delta-8-THC	0.054	2.722
THC	0.3	15.12
Delta-10-THC	0.004	0.2016
<b>Total Cannabinoids</b>	<b>0.61</b>	<b>30.9</b>
<b>Calculated THC Yield</b>	<b>0.30</b>	<b>15.12</b>
<b>Calculated CBD Yield</b>	<b>0.24</b>	<b>12.10</b>

Calculated Maximum THC Yield = THC + 0.877 \* THCA  
Calculated Maximum CBD Yield = CBD + 0.877 \* CBDA

**Marin Analytics, LLC**  
250 Bel Marin Keys Blvd, Suite D4  
Novato, CA 94949

415-936-6477 / sarabiancalana1@gmail.com

**Sara Biancalana**  
Chief Scientist

This sample has been tested by Marin Analytics, LLC using valid testing methodologies and a quality system. Values reported relate only to the sample tested. Marin Analytics, LLC makes no claims as to the efficacy, safety or other risks associated with any detected or non-detected levels of any compounds reported herein. This Certificate shall not be reproduced except in full, without the written approval of Marin Analytics, LLC.